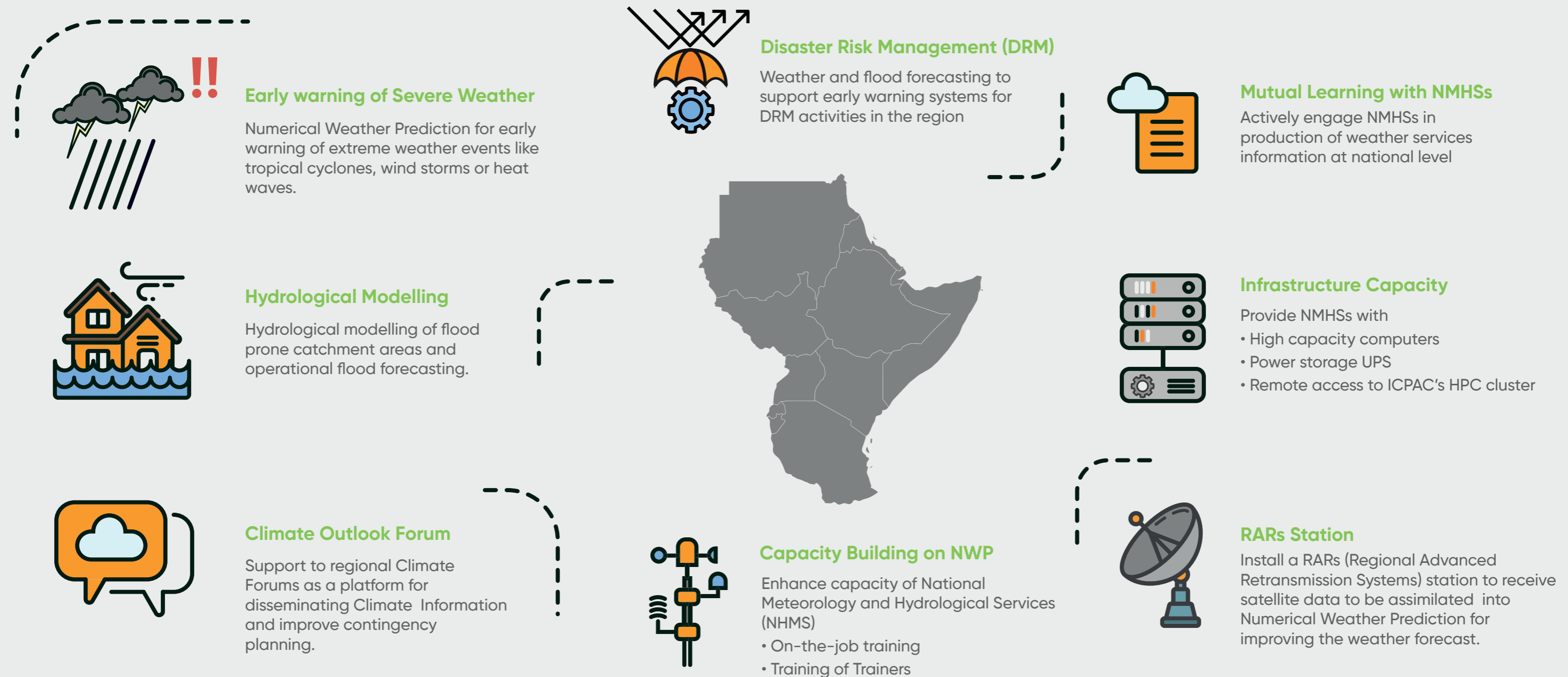


Satellite and Weather Information for Disaster Resilience in East Africa (SAWIDREA)

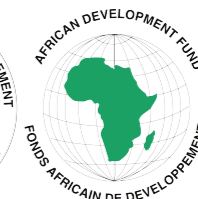
Hydro-meteorological hazards account for 90% of natural disasters in East Africa region. Climate change is predicted to increase the intensity and frequency of these hazards. SAWIDREA works to mitigate the impact of these hazards by building regional and national capacities in severe weather early warning systems.



@ICPAC_IGAD @ICPAC_IGAD IGAD Climate Prediction and Applications Centre

MEMBER COUNTRIES: Djibouti | Eritrea | Ethiopia | Kenya | Somalia | South Sudan | Sudan | Uganda | Burundi | Rwanda | Tanzania

P.O.Box 10304-00100 Nairobi, Kenya | www.icpac.net | +254 020 3514426



ICPAC
IGAD Climate Prediction & Applications Centre