

TEN DAY BULLETIN

Issue No: 202013

Dekad: 1-10 May 2020



Key messages

Forecast (1-10 May 2020)

- **Heavy rainfall above 200 mm** expected in western and northwestern Kenya and along the Ethiopian rift.
- **Thermal discomfort** is expected in south and southeastern Sudan extending into northwestern Ethiopia and northern south Sudan.

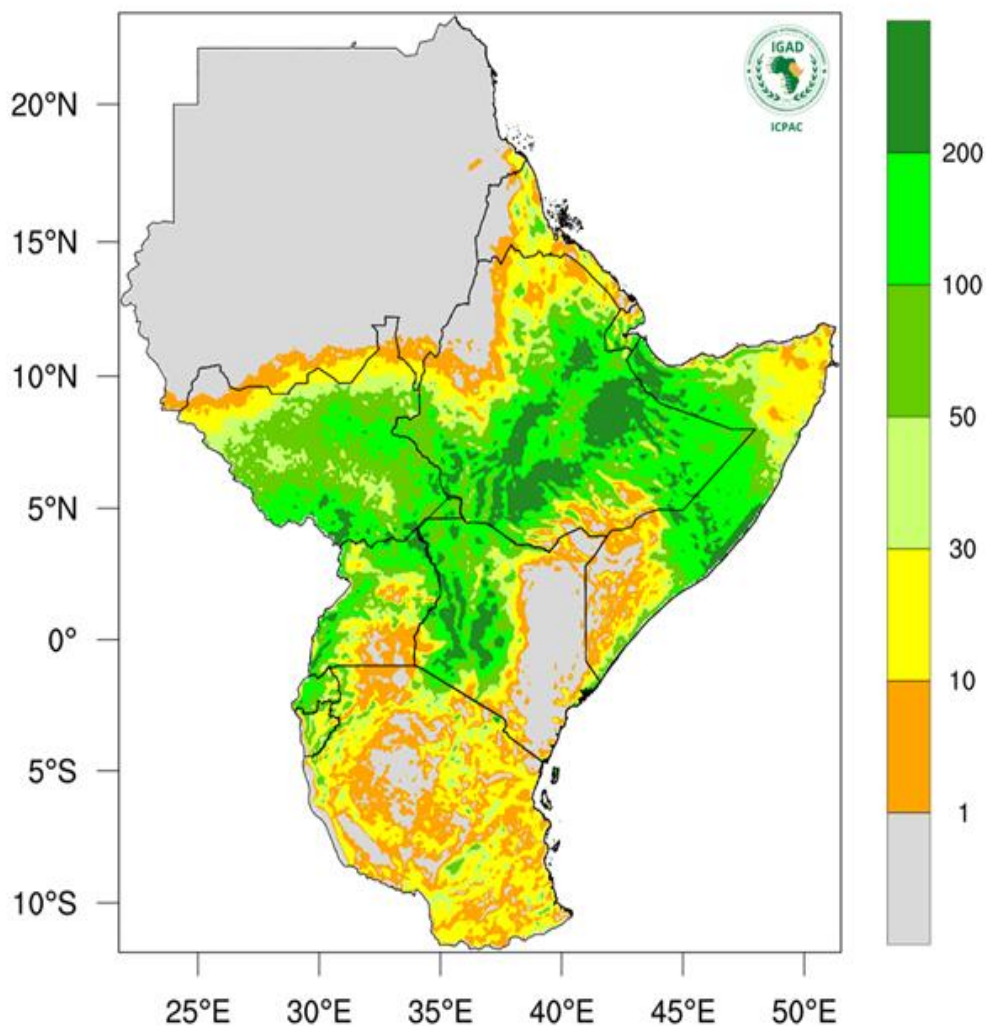
Observed rainfall (11-20 April 2020)

- **Severely dry** everywhere in Djibouti, northeastern Uganda, most parts of Kenya, much of Somalia, western and coastal parts of Tanzania
- **Unusual high daytime temperature anomalies** were southern Tanzania, everywhere in Rwanda and Burundi, southwestern Uganda, central and northeastern Kenya, southern parts of Ethiopia.
- **Cooler than average minimum** temperatures over Sudan and South Sudan, eastern Ethiopia and northern Somalia.



ICPAC
IGAD Climate Prediction
& Applications Centre

Rainfall Forecast 1-10 May 2020



Range	Category
<1 mm	No rain
1 – 10 mm	Dry conditions
10 -50 mm	Light rain
50 -100 mm	Moderate rainfall
100 - 200 mm	Heavy Rainfall
> 200 mm	Very heavy

Forecast



Heavy rainfall above 200 mm is forecasted over most parts of central and much of western Kenya, western and northern Uganda, southern South Sudan, central and northwestern regions of Somalia, and along the Ethiopian rift.



Moderate rainfall in the range 50-200 mm expected much of South Sudan, southeastern Ethiopia to central Somalia, northwestern Kenya and parts of western & northern Uganda and western Rwanda and Djibouti.



Light rainfall less than 50 mm forecasted over Tanzania, southwestern & northeastern Somalia, Eritrea, part of central Uganda, northern Ethiopia, and northern South Sudan.



Sudan, Eastern Kenya extending to Somalia, and central Tanzania are forecasted to **remain dry**

Alerts



Localized heavy rainfall is expected

Expected Impacts



Positive impacts: Good and favor conditions for agriculture in central Kenya and most parts of Ethiopia and southern parts of South Sudan.

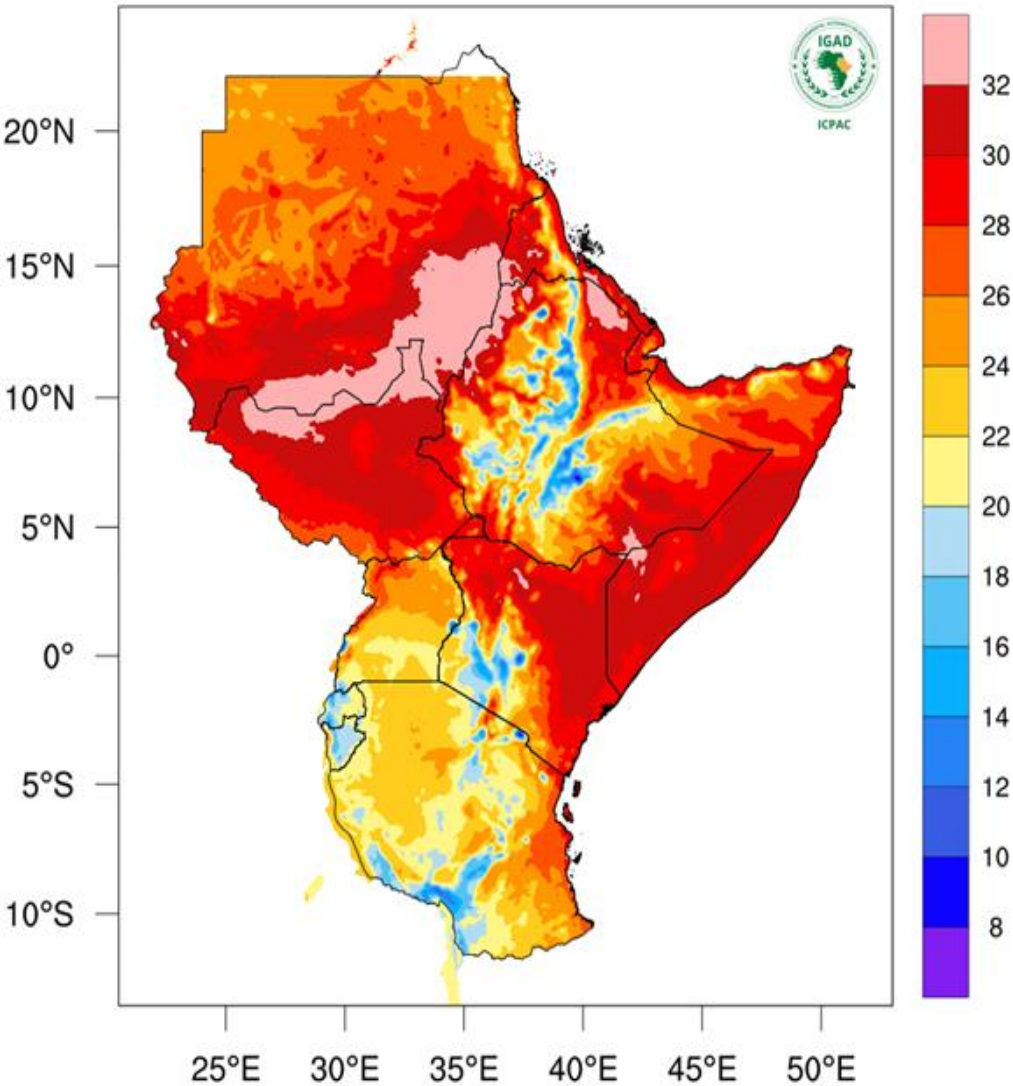
Negative impacts: mud and landslides expected in over the Great Rift Valley of Kenya

Advisories



Temperature Forecast

1-10 May 2020



Range	Category
< 22°C	Moderate to low temperature
22°C - 30°C	Moderate temperature
> 30°C	High temperature

Forecast



High temperatures above 32 °C expected over South Sudan and Sudan border region extending to southeastern Sudan and into northwestern Ethiopia, and in Eritrea. Regions in eastern Kenya, southern & central Somalia, South Sudan, south eastern Ethiopia, much of Eritrea are forecasted to experience between 30 and 32°C.



Moderate temperature between 20 and 30 °C expected over Uganda, northern and southern Tanzania, eastern Rwanda, parts of southern & western Kenya, parts of central Ethiopia, parts of northeastern Somalia, Djibouti and northern Sudan.



Low temperatures below 20 °C expected over expected over western Rwanda, Burundi, central Kenya, south western Tanzania and parts of central Ethiopia.

Alerts



High temperature discomfort expected in eastern Sudan into western Ethiopia and Eritrea. Regions in eastern Kenya

Expected Impacts



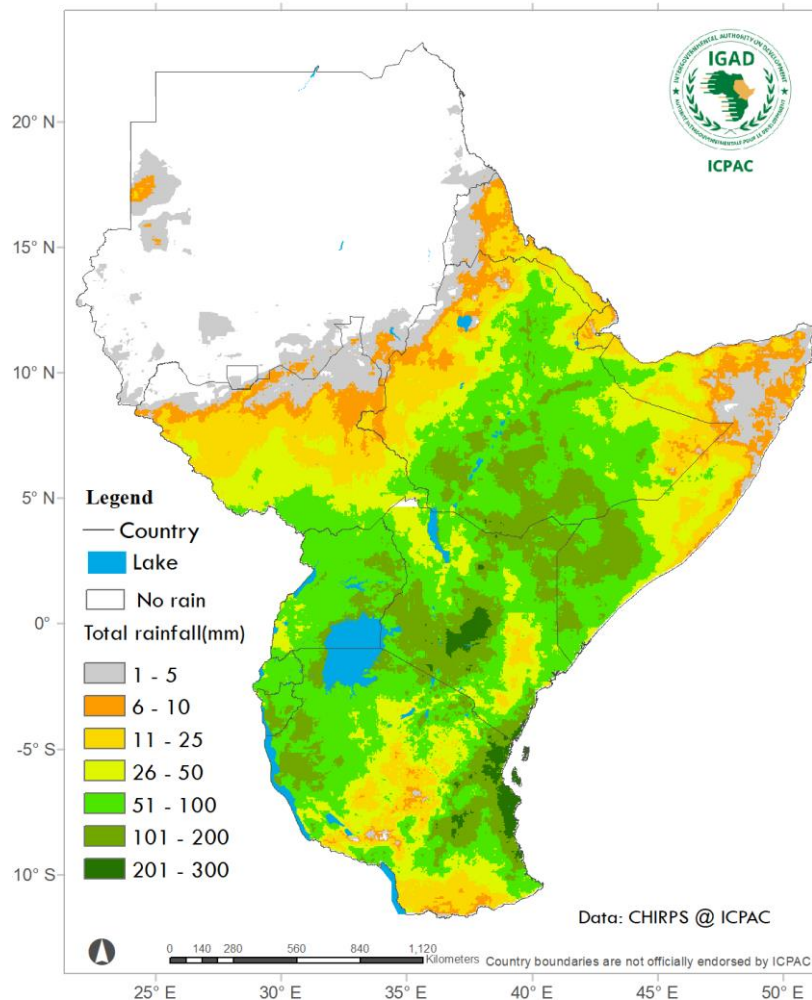
High temperatures discomfort are expected in southeastern Sudan, northern South Sudan, southern Eritrea and areas in eastern Kenya

Advisories



People

Observed rainfall (Total) 11-20 April 2020



Range	Category
<1 mm	No rain
1 – 10 mm	Dry conditions
10 -50 mm	Light rain
50 -100 mm	Moderate rainfall
100 - 200 mm	Heavy Rainfall
> 200 mm	Very heavy

Total rainfall ranging from



1 – 10 mm observed in northern parts of South Sudan, northern Somalia, most parts of Eritrea



11 – 50 mm observed in central and southern Tanzania, most parts of South Sudan, northwestern and eastern Ethiopia, most parts of southern and central Eritrea, everywhere in Djibouti, central and northwestern Somalia.



51 - 100 mm observed in most parts of central and northern Burundi, western and northeastern Tanzania, everywhere in Rwanda, most parts of central and northern Uganda, much parts of central Ethiopia and southern parts of South Sudan.



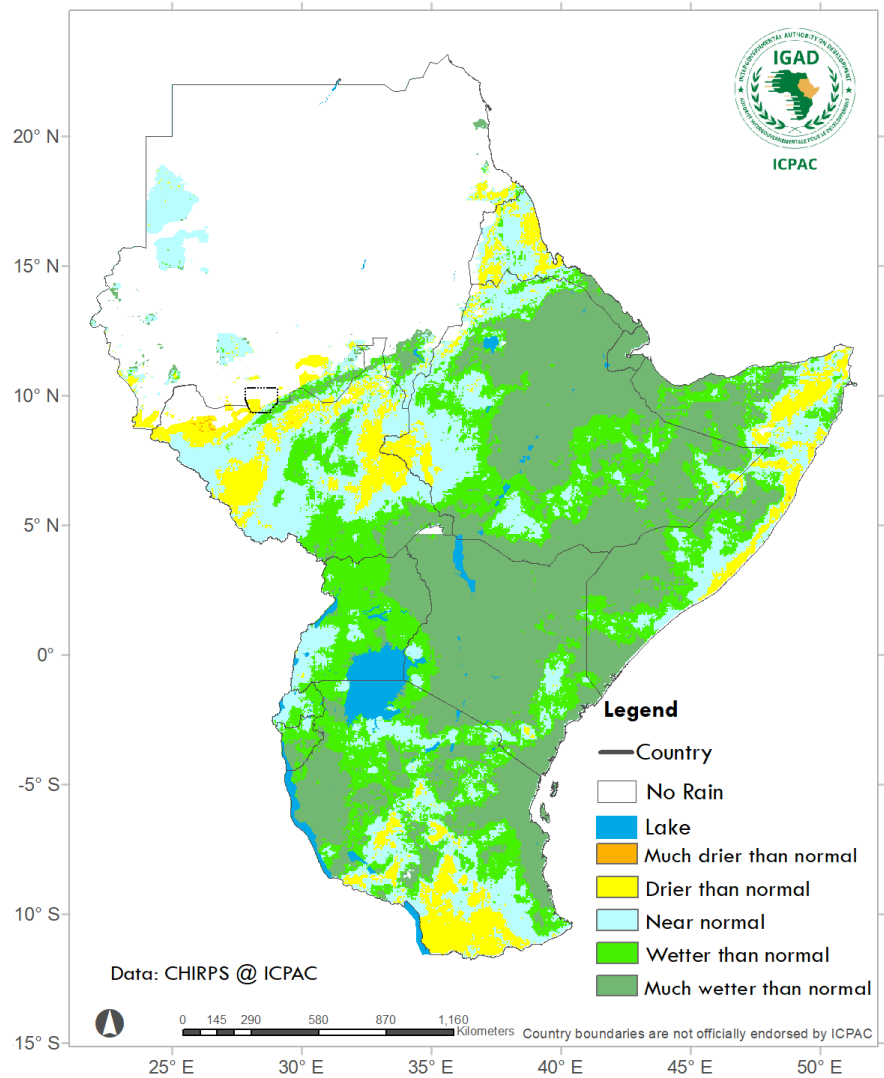
101 - 200 mm observed 100 to 200 observed in lake Victoria region of Uganda and Tanzania, most parts of southern, central, northeastern and southern coast of Kenya, western, eastern and coastal parts of Tanzania, southern Burundi, southern central Ethiopia and southern Somalia.



Dry conditions (no rain) were recorded in most parts of Sudan.

Observed rainfall (Percent of normal)

11-20 April 2020



Range	Category
< 30 %	Much drier than normal
75 – 30 %	Drier than normal
75 -125 %	Near normal
125- 200 %	wetter than normal
> 200 %	Much water than normal

Observed rainfall % of LTM



Severely dry (much drier than usual) conditions not observed in the region



Moderate dry (drier than usual) conditions observed in in northern and Somalia coast, western and eastern South Sudan, southern Tanzania.



Normal rainfall conditions (usual average conditions) observed in southwestern Uganda, much of South Sudan, central and western Rwanda, central Somalia, much of Eretria and northern Ethiopia.



Wetter than normal conditions observed in in most parts of Burundi, northeastern Rwanda, most parts of central and northern Uganda, southern parts of South Sudan.



Severely wet(much wetter than usual) conditions observed everywhere in Djibouti, central and northeastern Ethiopia, southeastern South Sudan, northeastern Uganda, most parts of west, north, central, and coastal Kenya, much southern and northwestern Somalia, western and costal parts of Tanzania.



Sudan is still dry in this time of the season

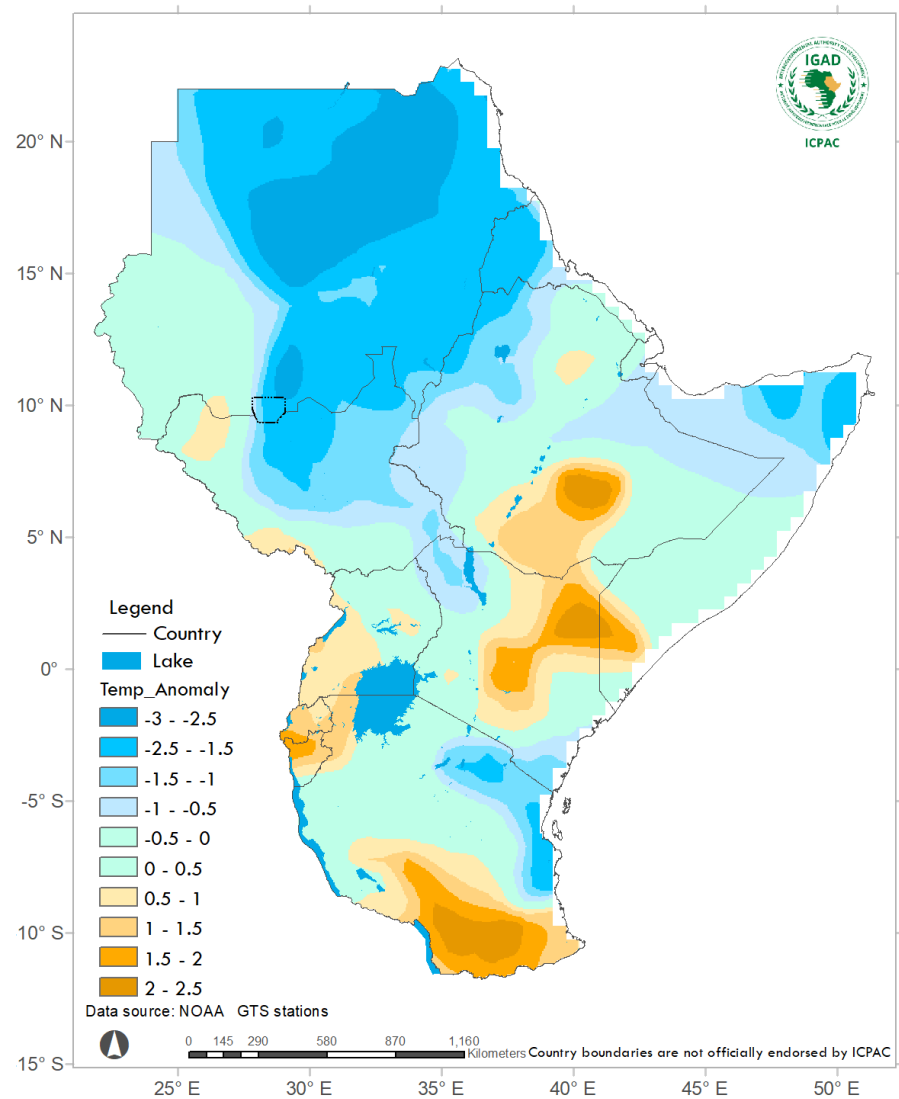
Impacts



Positive impacts: improve in Agriculture and livestock pastures in most parts of Uganda and Kenya were observed

Negative impacts: land and mudslides in Kenya recorded. Water related diseases such as cholera reported

Observed Maximum Temperature anomalies 11-20 April 2020



Range	Category
> 0.6 °C	Warmer than normal
-0.5 - 0.5°C	Normal temperature
< - 0.6 °C	Cooler than normal

Maximum Temperature anomolies



Warmer than normal maximum temperature (daytime hotter than usual) recorded over southern Tanzania, several areas of Rwanda and Burundi, southwestern Uganda, central and northeastern Kenya, southern parts of Ethiopia.

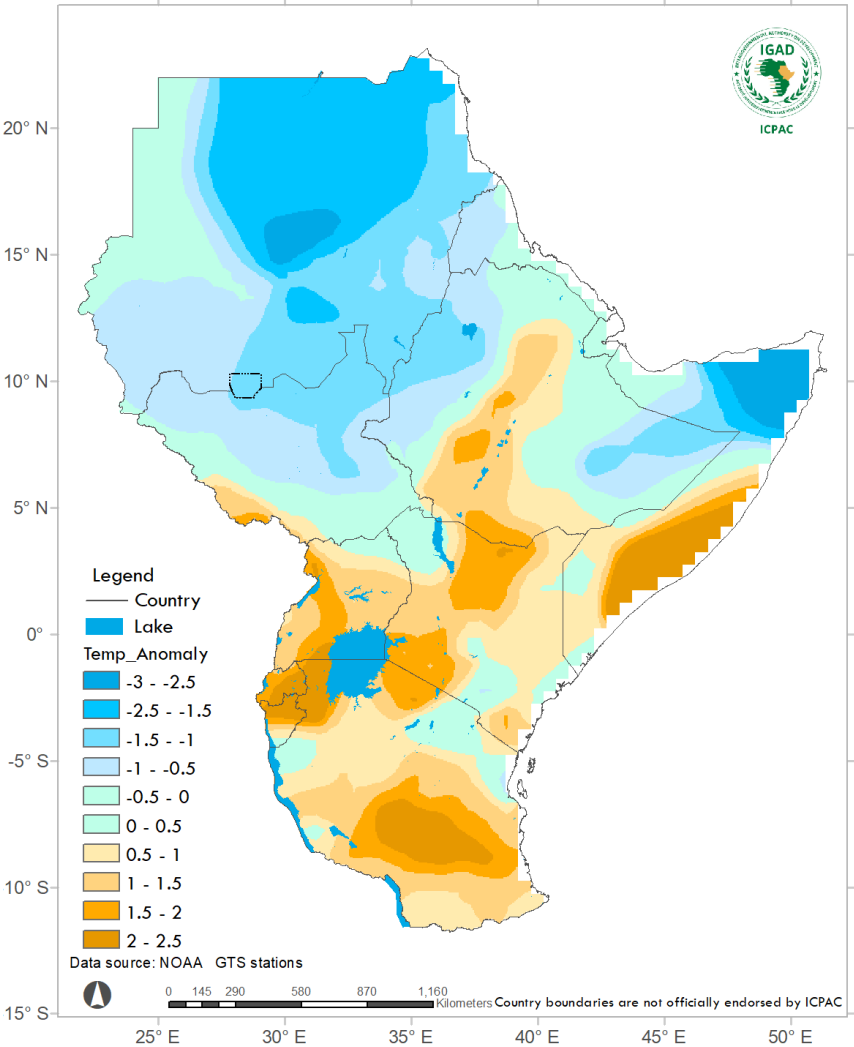


Normal day time temperature recorded in Darfour region of Sudan, western and southeastern Kenya, central and western Tanzania, central and southern Somalia, and in east, west and northeastern Ethiopia.



Cooler than average maximum temperature (daytime cooler than usual) recorded in most parts of central , eastern and northern Sudan, northern Somalia, central and northern parts of South Sudan, northeastern and costal Tanzania.

Observed Minimum Temperature anomalies 11-20 April 2020



Range	Category
>0.6 °C	Warmer than normal
-0.5 - 0.5°C	Normal temperature
< - 0.6 °C	Cooler than normal

Minimum Temperature anomalies

- Warmer than average** minimum temperature (hotter than usual) recorded in most parts of Tanzania, everywhere in Burundi and Rwanda, most parts of Uganda and Kenya, southern and central Ethiopia, most parts of southern Somalia, and in southwestern South Sudan.
- Normal temperature** recorded northeastern Tanzania, southeast and northwest of Kenya, north and eastern Ethiopia, south and swestern South Sudan, and northwestern Sudan.
- Cooler than average** minimum (cooler than usual), recorded over most parts of Sudan, northern South Sudan, western and eastern Ethiopia, and northern Somalia.



ICPAC

IGAD Climate Prediction
& Applications Centre

**Delivering Climate Services to
the Greater Horn of Africa**



@ICPAC_IGAD



@ICPAC_IGAD



IGAD Climate Prediction and Applications Centre