

TEN DAY BULLETIN

Issue No: 202016

Dekad: 1-10 June 2020



Key messages

Forecast (1-10 June 2020)

- **Heavy rainfall above 200 mm** expected over central and western Ethiopia and localized areas in the northern part of South Sudan.
- **Thermal discomfort** is over much of Sudan, Eritrea, northeastern Ethiopia.

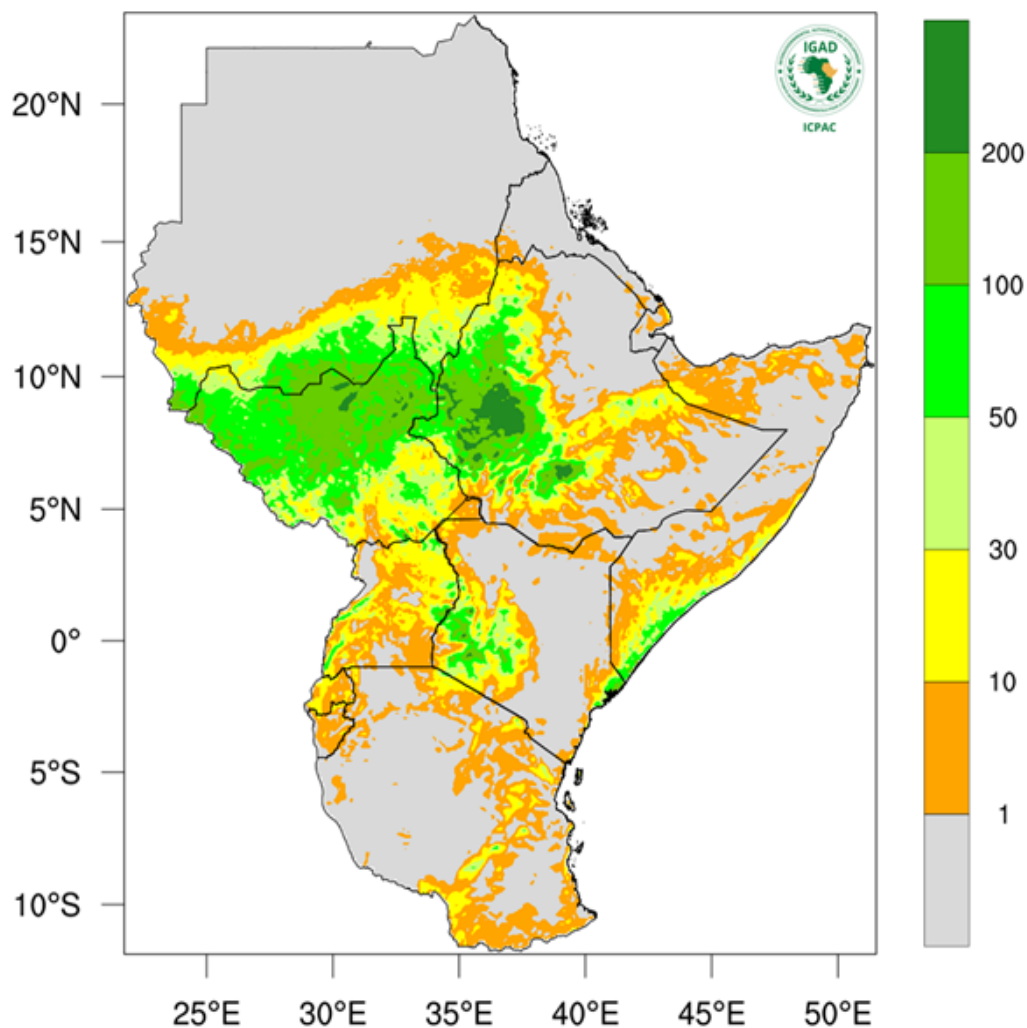
Observed rainfall (11-20 May 2020)

- **Severely wet** in northeastern and Eastern South Sudan, northeastern Sudan.
- **Unusual higher than average maximum temperatures** were observed in southern Tanzania, northeastern Somalia, western South Sudan, central and northeastern Kenya, and central Tanzania.
- **Cooler than average minimum** temperatures over southeastern Ethiopia, most parts of southern, central and western Uganda, and central Somalia.



ICPAC
IGAD Climate Prediction
& Applications Centre

Rainfall Forecast 1-10 June 2020



| Range | Category |
|--------------|-------------------|
| <1 mm | No rain |
| 1 - 10 mm | Dry conditions |
| 10 -50 mm | Light rain |
| 50 -100 mm | Moderate rainfall |
| 100 - 200 mm | Heavy Rainfall |
| > 200 mm | Very heavy |

Forecast



Heavy rainfall above 200 mm is expected over central and western Ethiopia and localized areas in the northern part of South Sudan.



Moderate rainfall in the range 50-200 mm is forecasted over the northern half of South Sudan extending to Sudan border, coastal Somalia extending to the Kenyan coast, parts of central and western Kenya, and much of western Ethiopia.



Light rainfall less than 50 mm forecasted over southern regions of Sudan, parts of northwestern and eastern Ethiopia, Uganda, and parts of eastern & southern Tanzania.



Much of Tanzania, southern, eastern & northwestern Kenya, southeastern and northern Ethiopia, central and northern Somalia, Djibouti, Eritrea, and much of Sudan are **expected to remain dry**.

Alerts



Localized heavy rainfall is expected in western Ethiopia, central and northern South Sudan, and southern parts of Sudan.

Expected Impacts



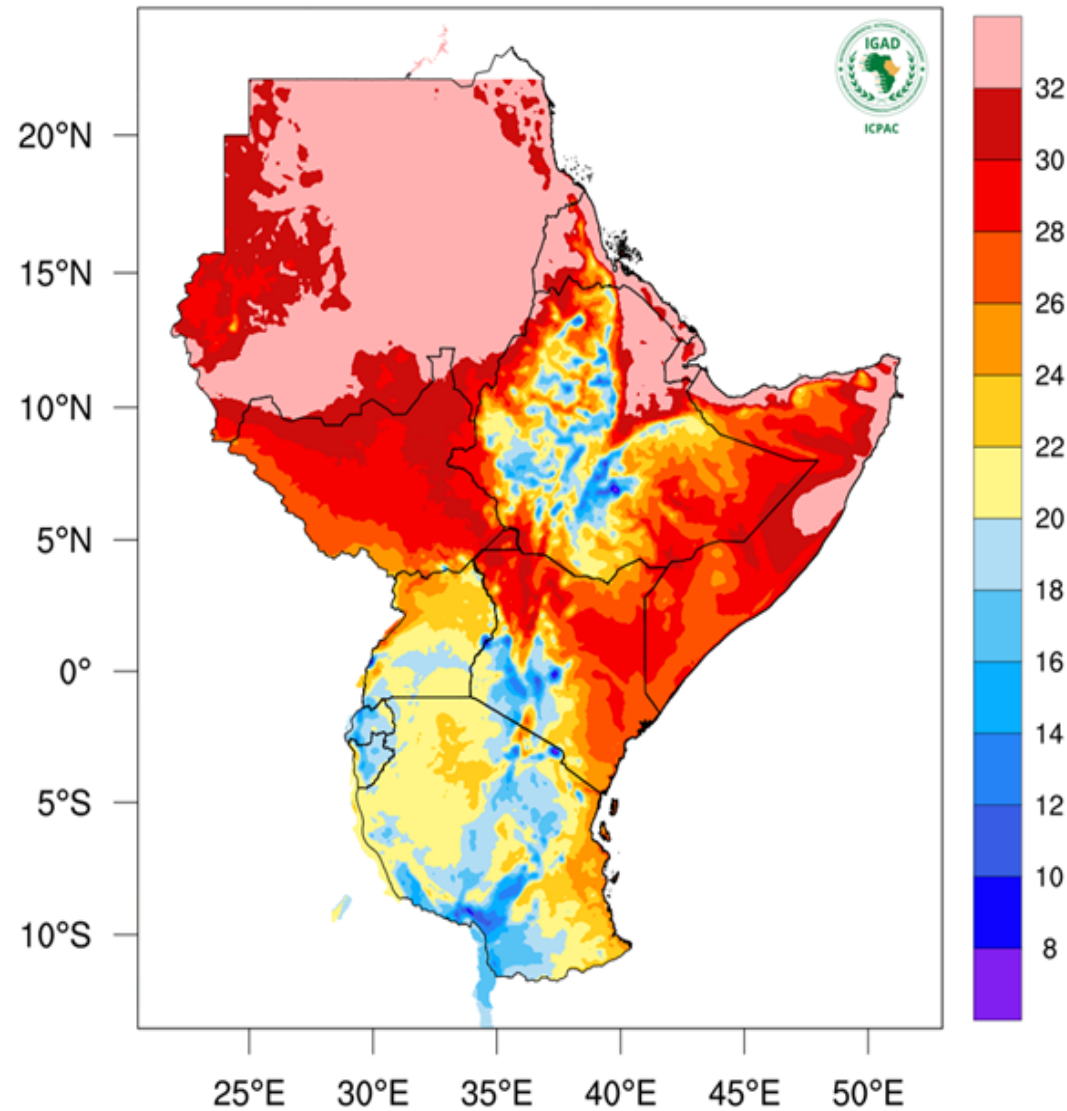
Positive impacts: Good and favorable conditions for agriculture in central and western Kenya, western Ethiopia, central and northern South Sudan, and southern parts of Sudan.
Negative impacts: floods and related impacts, water-related diseases, mud, and landslides can be expected in over several areas expected to receive moderate to heavy rainfall. The rainfall conditions are likely to sustain the spread of the locust swarms.

Advisories



Farmers in western Ethiopia, central and northern South Sudan, and southern parts of Sudan advised to take the advantage of good and favorable conditions for agriculture.

Temperature Forecast 1-10 June 2020



| Range | Category |
|-------------|-----------------------------|
| < 22°C | Moderate to low temperature |
| 22°C - 30°C | Moderate temperature |
| > 30°C | High temperature |

Forecast



High temperatures above 32° C are expected in many parts of Sudan, Eritrea, north eastern Ethiopia, Djibouti and coastal areas of central and northern Somalia.



Moderate temperatures between 20 and 30° C are expected over South Sudan, much of Ethiopia, Somalia, much of Kenya, Uganda, and Tanzania.



Low temperatures below 20° C expected over Rwanda, Burundi, the southern part of Uganda, central to northern parts of Ethiopia, and along with central and southern Tanzania

Alerts



High temperatures discomfort is expected over much of Sudan, Eritrea, northeastern Ethiopia.

Expected Impacts



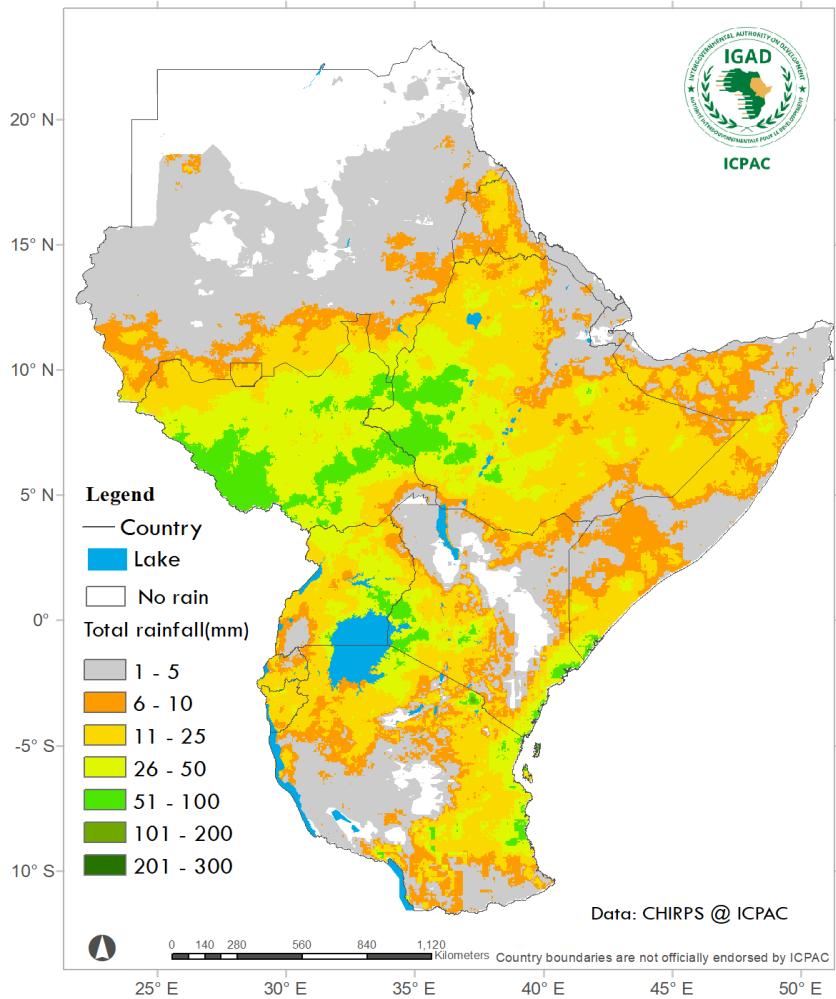
High temperatures discomfort is expected Sudan, Eritrea, north eastern Ethiopia, Djibouti and coastal areas of central and northern Somalia.

Advisories



People advised use cooling air conditions, shelters and shades

Observed rainfall (Total) 11-20 May 2020



| Range | Category |
|--------------|-------------------|
| <1 mm | No rain |
| 1 – 10 mm | Dry conditions |
| 10 -50 mm | Light rain |
| 50 -100 mm | Moderate rainfall |
| 100 - 200 mm | Heavy Rainfall |
| > 200 mm | Very heavy |

Total rainfall



1 – 10 mm observed in southern parts of Sudan, southern Eritrea, parts of Djibouti, much of eastern Kenya, northeastern and southwest Somalia, and northern Tanzania.



11 – 50 mm observed in much of central, northern and eastern Ethiopia, many parts of central south Sudan, northern Uganda,



51 - 100 mm observed in the southwest and southern parts of Ethiopia, Southwest, eastern of South Sudan, much of eastern and eastern Uganda, southern coast of Somalia, and western, central and the coast of Kenya and Tanzania.



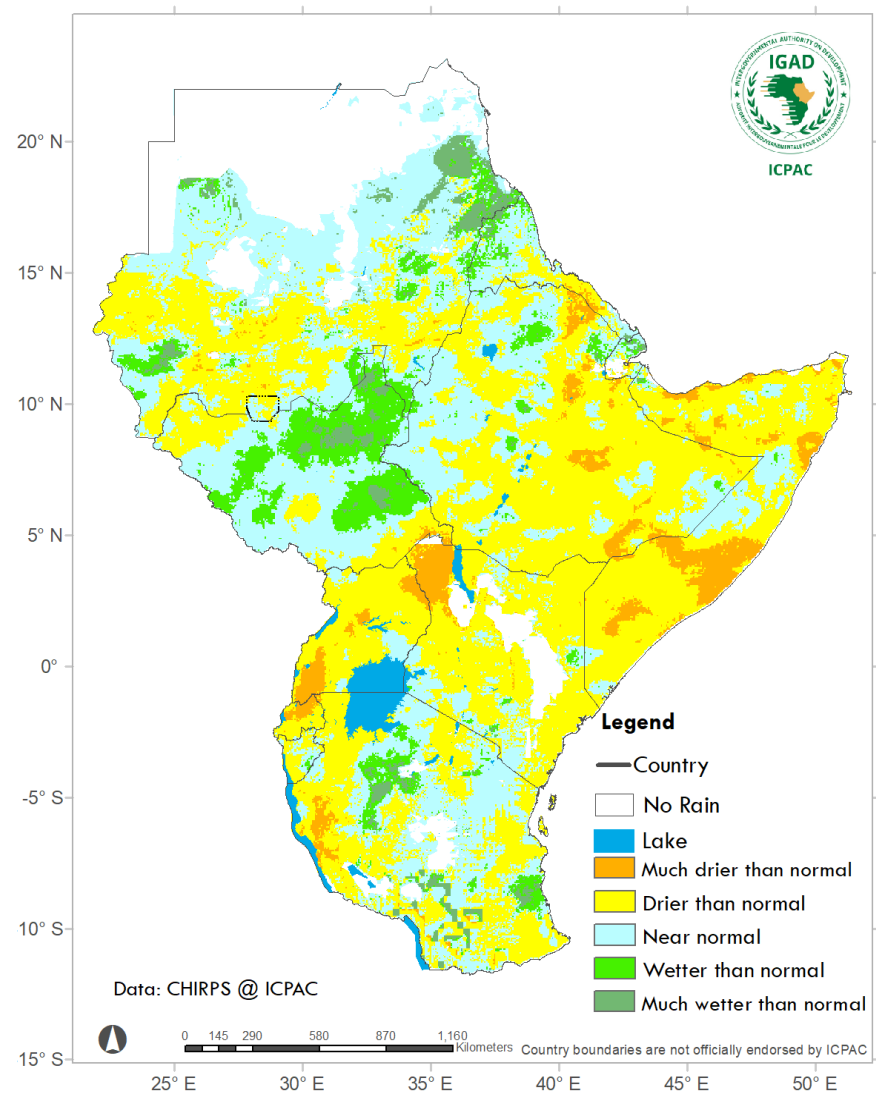
101 - 200 mm observed 100 to 200 is not observed in most parts of the region.



Dry conditions (no rain) were recorded in the northern part of Sudan, northeastern Kenya and most parts of southern and western Tanzania.

Observed rainfall (Percent of normal)

11-20 May 2020



| Range | Category |
|------------|------------------------|
| < 30 % | Much drier than normal |
| 75 - 30 % | Drier than normal |
| 75 -125 % | Near normal |
| 125- 200 % | wetter than normal |
| > 200 % | Much water than normal |

Observed rainfall as percentage of the long term mean



Severely dry (much drier than usual) conditions observed in northeast Kenya, central Somalia, southwestern Uganda.



Moderate dry (drier than usual) conditions observed in most parts of Ethiopia, southern, central and western Sudan, southern, Eritrea, most parts of Somalia, Kenya, Uganda, Rwanda, Burundi, and Tanzania.



Normal rainfall conditions (usual average conditions) observed in southwestern and central South Sudan, western and northern Ethiopia, western Kenya, southwestern and northern Sudan.



Wetter than normal conditions observed in many parts of northeastern and eastern South Sudan, northeastern Sudan.



Severely wet(much wetter than usual) conditions observed in northeastern and eastern South Sudan, northeastern Sudan.



Dry conditions observed in the northern part of Sudan, northeastern Kenya and most parts of southern and western Tanzania.

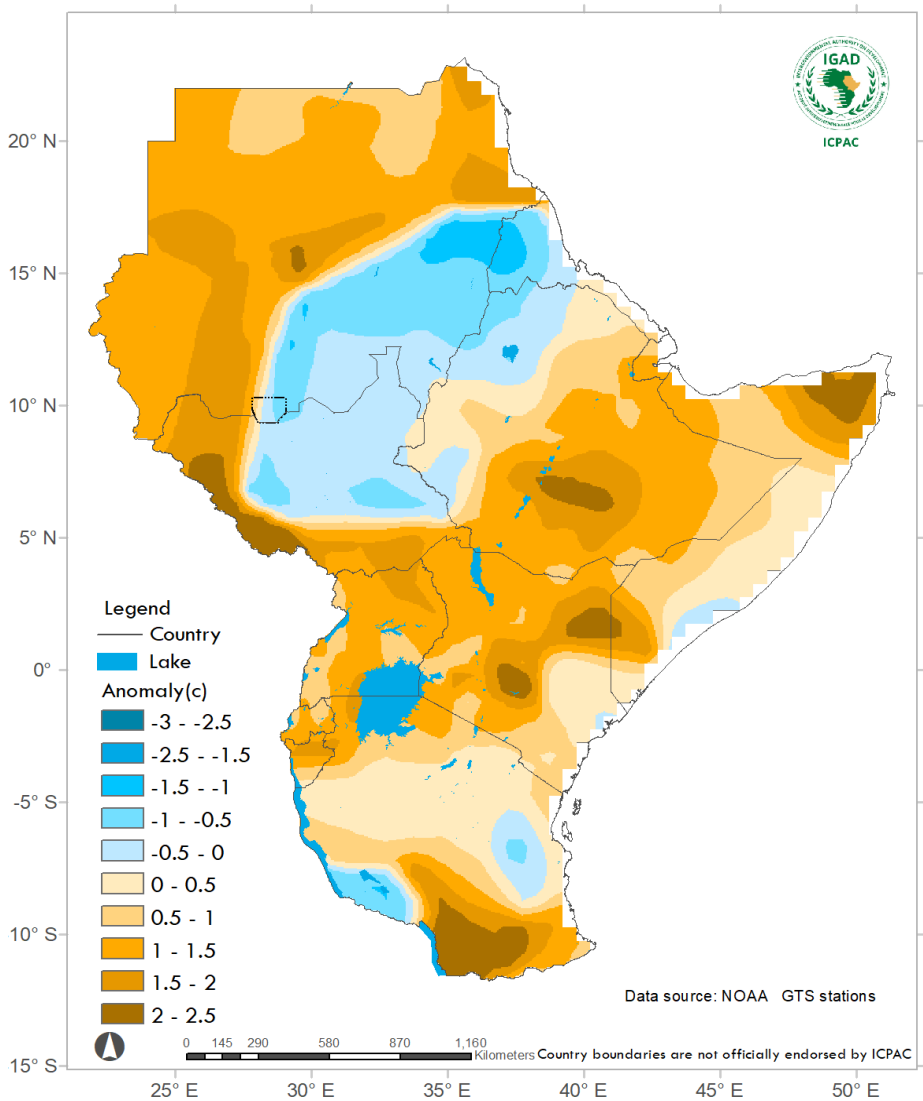
Impacts



Positive impacts: improve in Agriculture, pastures and water resources in northeastern and Eastern South Sudan, northeastern Sudan.

Negative impacts: floods and related impacts reported, land and mudslides in Kenya. Increase in water related diseases such as cholera reported and malaria reported in Kenya, Somalia, Uganda

Observed Maximum Temperature anomalies 11-20 May 2020



| Range | Category |
|--------------|--------------------|
| > 0.6 °C | Warmer than normal |
| -0.5 - 0.5°C | Normal temperature |
| < - 0.6 °C | Cooler than normal |

Maximum Temperature anomolies

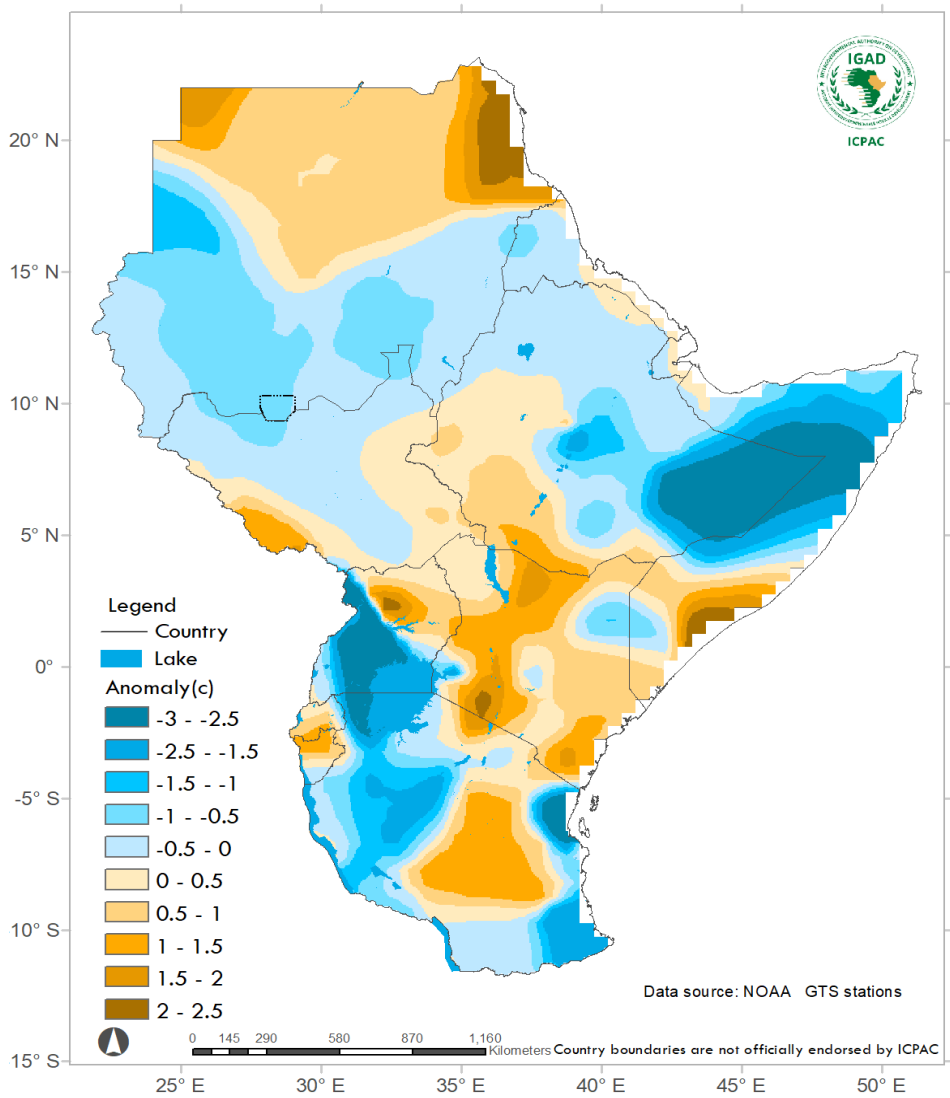


Warmer than usual maximum temperature recorded over northern and western Sudan, northern and southwestern and southern South Sudan, most parts of southern, central and eastern Ethiopia, most of Kenya and Uganda, Rwanda, Burundi southern, central and northern Tanzania.



Cooler than usual maximum temperature recorded in central and northeastern South Sudan, southeastern, eastern Sudan, northern and western Eritrea, northeastern Ethiopia, isolated areas in western and eastern Tanzania

Observed Minimum Temperature anomalies 11-20 May 2020



| Range | Category |
|--------------|--------------------|
| >0.6 °C | Warmer than normal |
| -0.5 - 0.5°C | Normal temperature |
| < - 0.6 °C | Cooler than normal |

Minimum Temperature anomalies



Warmer than usual minimum temperature recorded in northern and red sea coast of Sudan, southwestern and eastern South Sudan, western and southwestern Ethiopia, northern and northeastern Uganda, most parts of Rwanda and Burundi, most parts of southern, central and northern Kenya, central Tanzania.



Cooler than usual minimum recorded over southern, central and western Sudan, northern , central, eastern and southeastern Ethiopia, most parts of southern, central and western Uganda, southern, western, northwestern and coastal Tanzania.



ICPAC

IGAD Climate Prediction
& Applications Centre

**Delivering Climate Services to
the Greater Horn of Africa**



@ICPAC_IGAD



@ICPAC_IGAD



IGAD Climate Prediction and Applications Centre