

MONTHLY BULLETIN

Issue No: 115

Month: June 2020



Key messages

Forecast (June 2020)

- **Widespread wetter than usual conditions** over several parts of South Sudan, Ethiopia, Djibouti, northern Somalia, Uganda, western and central Kenya, southern parts of Sudan, and northern Tanzania.
- **Higher than usual temperatures** expected in several parts of Sudan, Djibouti, western and southern Uganda, and eastern and coastal Kenya.
- **Farmers and pastoralists** in Kenya, Uganda, Rwanda and Burundi are advised to take advantage of enhanced rainfall by investing in cash and food crops. Flood response is advised over parts of South Sudan, Djibouti, Somalia, and Sudan.

Observed rainfall (May 2020)

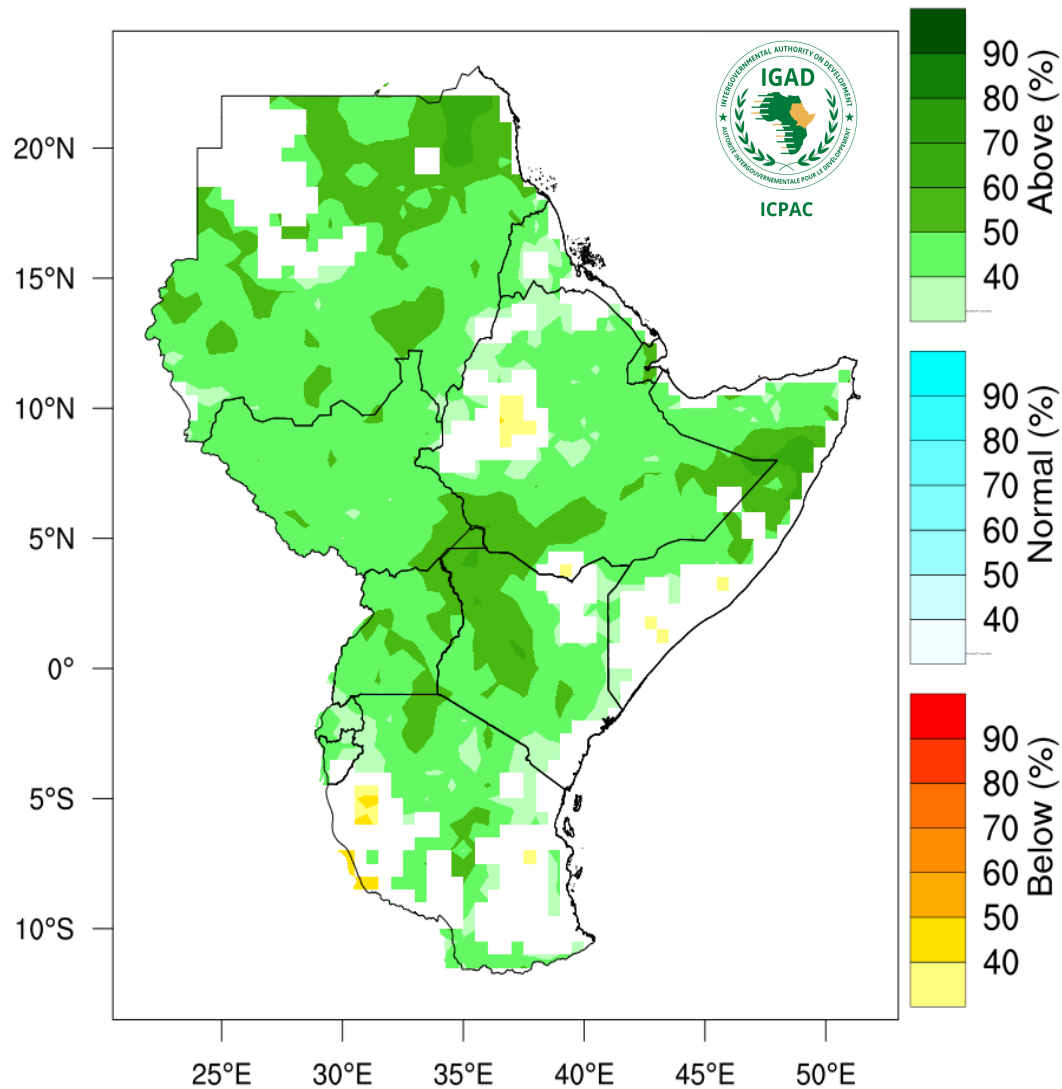
- **Much wetter than usual conditions** observed across the region.



ICPAC
IGAD Climate Prediction
& Applications Centre

Rainfall Forecast

June 2020



Range	Category
<0.6 °C	Above normal
-0.5 - 0.5°C	Normal
>0.6 °C	Below normal

Forecast



Higher than usual rainfall is expected over most parts of Sudan, Ethiopia, northern Somalia, South Sudan, Uganda, western and central Kenya, and northwest Tanzania.



Usual rainfall amount over northwest parts of Sudan, Eritrea, northwest and northern Ethiopia, northeast and coastal Kenya, Southern Somalia, and southeast Burundi.



Less than usual rainfall is forecasted for small area on western Ethiopia.

Alerts



Widespread high rainfall expected in South Sudan, northern Somalia, southwest Ethiopia.

Expected Impacts



Positive impacts: improvement in water availability and accessibility, favorable agricultural, and pasture conditions.

Negative impacts: Possibility of flooding and landslides and related impacts. Possible outbreaks of water and vector-borne diseases such as Malaria, cholera, and continued spread of the locust invasion.

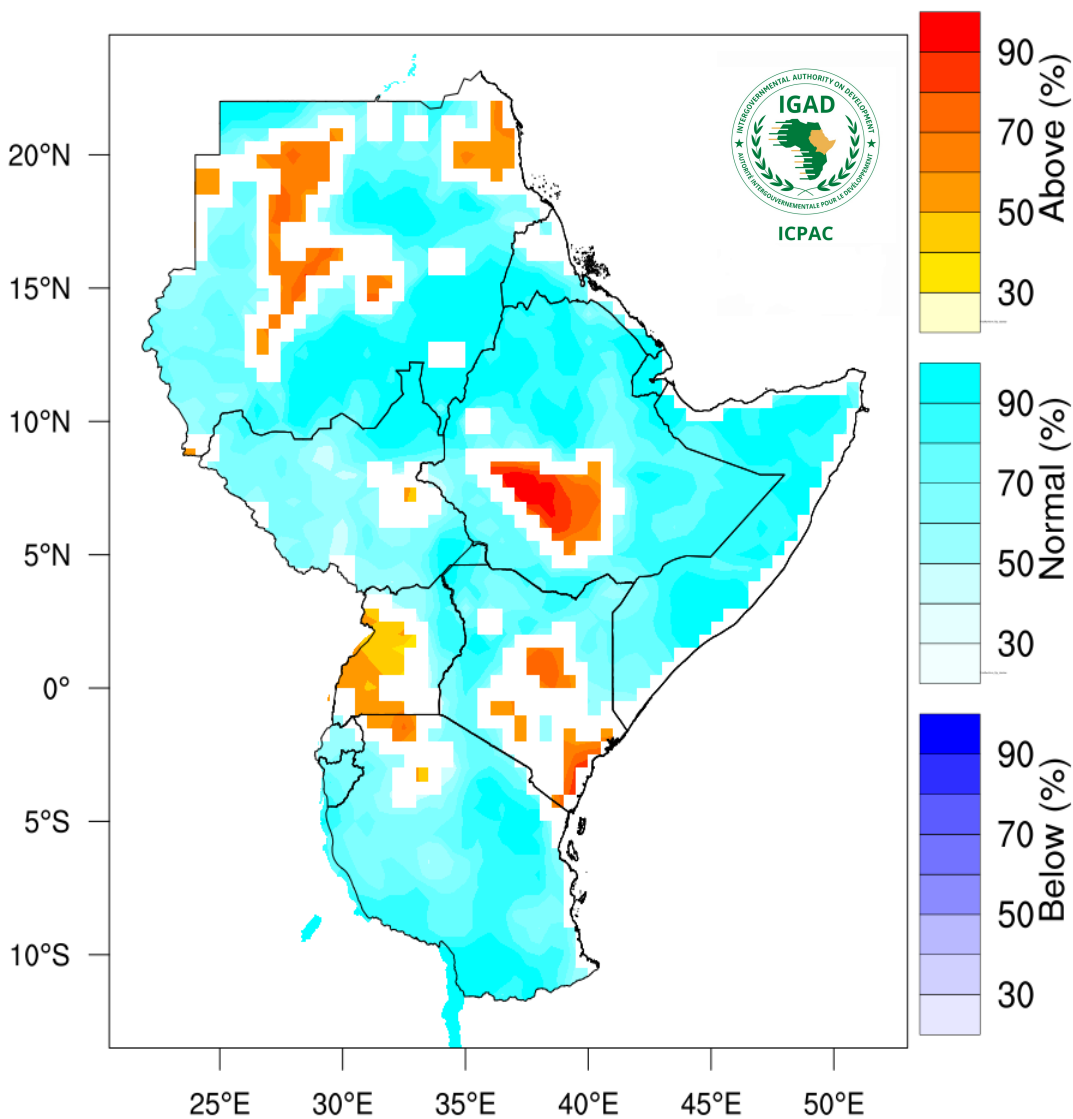
Advisories



Farmers and pastoralist in South Sudan, Sudan, Ethiopia, Kenya, Uganda, Rwanda, and Burundi are advised to take advantage of enhanced rainfall by investing in cash and food crops. Preparedness for flood risk in Ethiopia, South Sudan, Sudan, and Somalia.

Temperature Forecast

June 2020



Range	Category
< 15°C	Low temperature
20°C - 25°C	Moderate temperature
25°C - 30°C	High temperature
> 30°C	Very high temperature

Forecast



Mean temperature exceeding the normal (average) condition are expected parts of central and northern Sudan, central Ethiopia, west and south Uganda, and central and eastern parts of Kenya.



Near average temperatures is forecasted over several parts of the Greater Horn of Africa region.



Very little chances for below average mean temperature forecasted for the month of June 2020.

Alerts



High temperature discomfort expected in parts of Sudan and southern parts of Sudan.

Expected Impacts



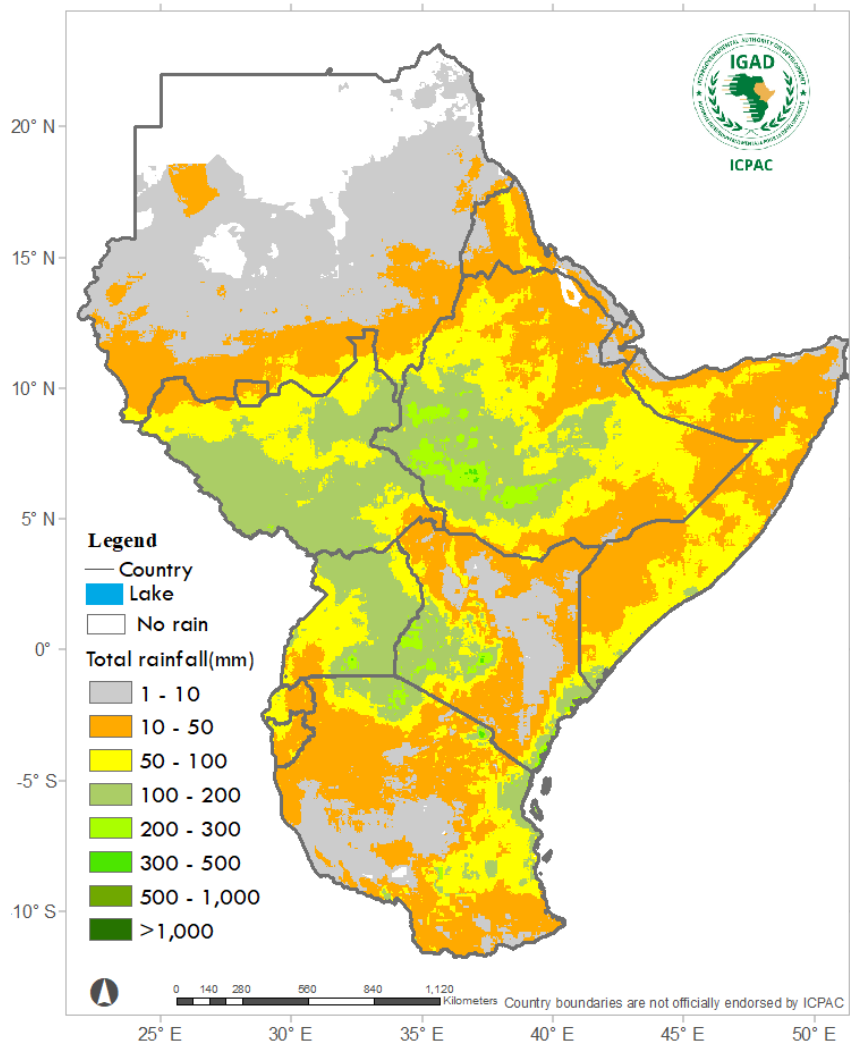
High temperature leading to negative moisture balance is likely in several parts of southern and western Uganda, and eastern and northern parts of Kenya.

Advisories



People in northern parts of South Sudan, southern parts of Sudan advised to take shelter and use shades to reduce the high temperature discomfort and risk of heatstroke.

Observed rainfall (Total) May 2019



Range	Category
<1 mm	No rain
10 – 50 mm	Dry conditions
50 -100 mm	Light rain
100 -300 mm	Moderate rainfall
300 - 500 mm	Heavy Rainfall
> 500 mm	Very heavy

Total rainfall



10 – 50 mm in several parts of Eritrea, southern parts of Sudan, northern parts of South Sudan, Somalia, northern and eastern Ethiopia, Rwanda, Burundi, and northern and southern Tanzania.



50 – 100 mm in northern South Sudan, central and eastern Ethiopia, central and southern coast of Somalia, western and central Uganda, parts of eastern Tanzania, and western Rwanda.



100 - 300 mm observed in several parts of South Sudan, southwest Ethiopia, northern and eastern Uganda, western, central and coastal Kenya, and the northern coast of Tanzania.



300 - 500 mm was not reported in any part of the region.



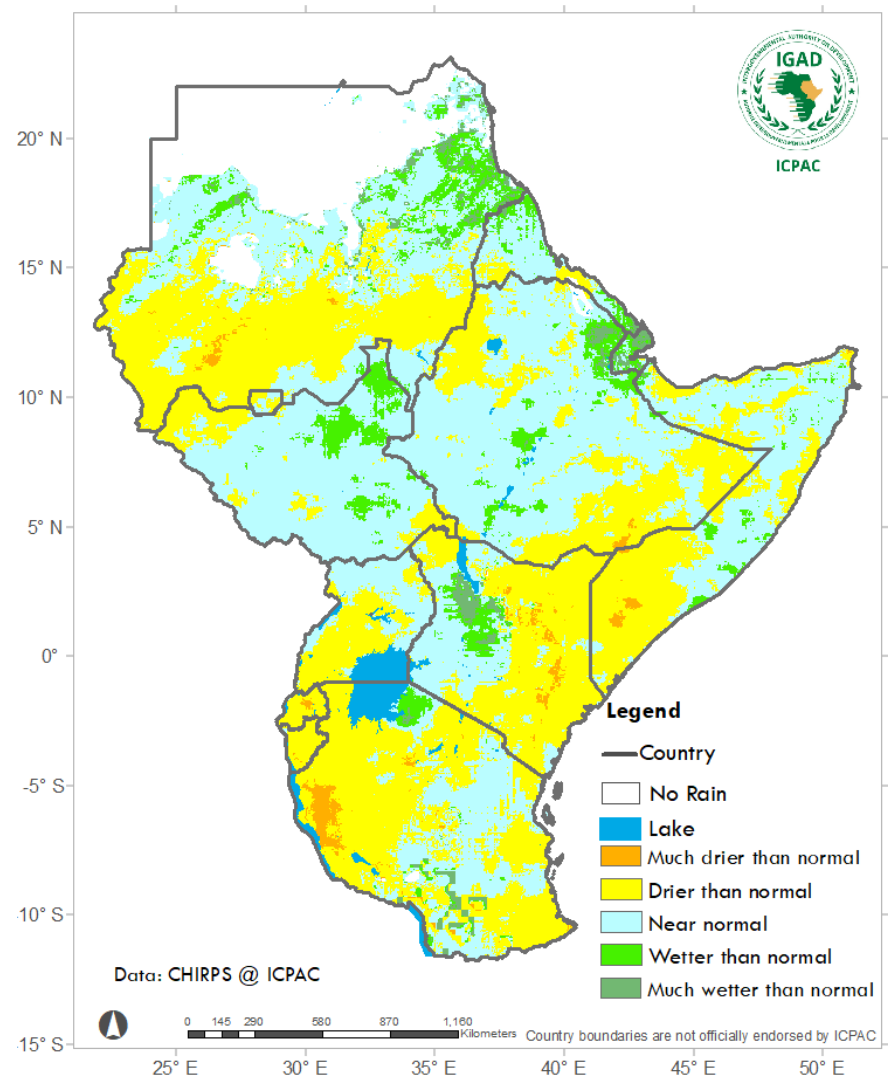
More than 500 mm was not reported in any part of the region.



Dry conditions(no rain) in several parts of north and central Sudan , northern and eastern Kenya, and western and central Tanzania.

Observed rainfall (Percent of normal)

May 2020



Range	Category
< 30 %	Much drier than normal
75 – 30 %	Drier than normal
75 -125 %	Near normal
125- 200 %	wetter than normal
> 200 %	Much water than normal

Anomalies



Severe dry conditions (much drier than usual) observed in few isolated parts of eastern Kenya, southern Somalia, and western Tanzania.



Drier than usual conditions observed in southern parts of Sudan, southeastern Ethiopia, southern Uganda, Rwanda, Burundi, eastern Kenya, southern Somalia, and much of north and southeast Tanzania.



Usual rainfall in western Eritrea, several parts of Ethiopia, much of South Sudan, parts of northern and eastern Uganda, western and central parts of Kenya, norther and central Somalia and central parts of Tanzania.



Wetter than usual conditions observed in several parts of Djibouti, southern Eritrea, and a few areas in northeast South Sudan.



Much wetter than usual conditions observed in eastern parts of Djibouti.

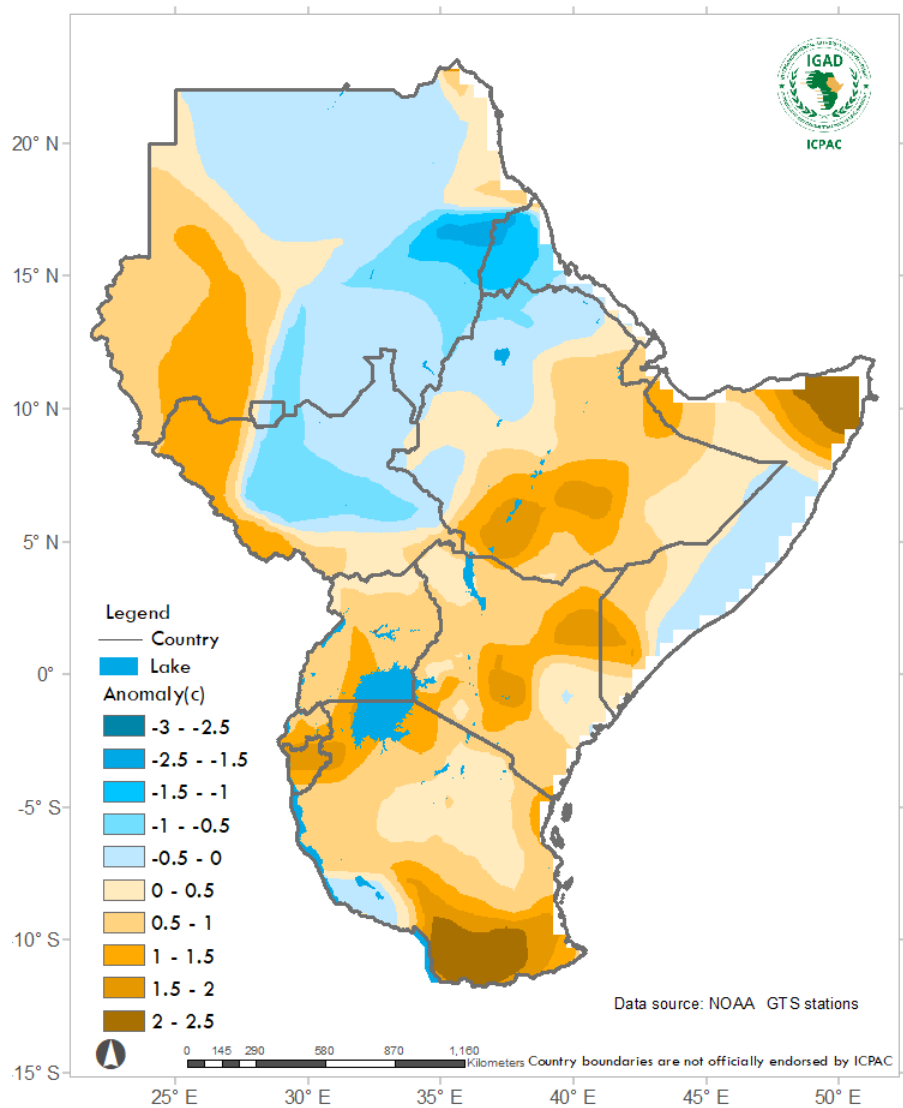
Impacts



Positive impacts: Improvement in water availability, favorable agricultural , pasture conditions.

Negative impacts: increase in water and vector borne diseases such as Malaria and cholera. Occurrence of flood and related impacts and landslides reported in Djibouti, and Somalia.

Observed Maximum Temperature anomalies May 2020



Range	Category
<0.6 °C	Warmer than normal
-0.5 - 0.5°C	Normal temperature
>0.6 °C	Cooler than normal

Maximum Temperature anomaly



Warmer than average (temperature hotter than usual) recorded over several parts of Tanzania, Rwanda, Burundi, Uganda, Kenya, Ethiopia, north and southern Somalia, western and southern South Sudan, and western Sudan.

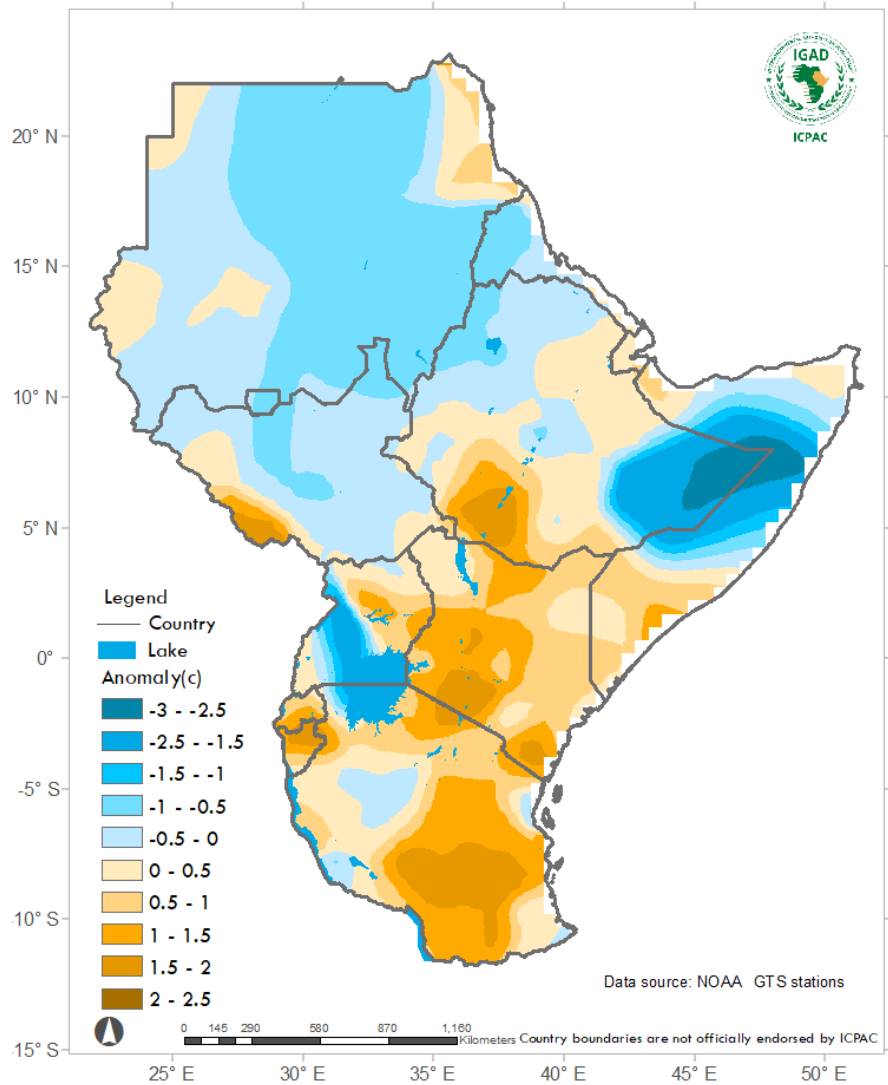


Near usual temperature recorded northern and southeast Sudan, northwest Ethiopia, central and southern Eritrea, over Djibouti, central Somalia, and southwest Tanzania.



Colder than usual maximum temperature recorded over eastern Sudan, and western Eritrea.

Observed Minimum Temperature anomalies May 2020



Range	Category
<0.6 °C	Warmer than normal
-0.5 - 0.5°C	Normal temperature
>0.6 °C	Cooler than normal

Minimum Temperature anomaly



Warmer than average minimum temperature (hotter than usual) recorded over several parts of Rwanda, Burundi, Kenya, Tanzania, southern parts of Somalia, southern Ethiopia, southwest South Sudan, and eastern Sudan.



Normal temperature recorded in much of western Sudan, several parts of South Sudan, northeastern Ethiopia, and western Tanzania.



Cooler than average minimum (temperature cooler than usual) recorded over several parts north and southeast Sudan, northwest and eastern parts of Ethiopia extending to central Somalia, and in western and central parts of Uganda.



ICPAC

IGAD Climate Prediction
& Applications Centre

**Delivering Climate Services to the
Greater Horn of Africa**



@ICPAC_IGAD



@ICPAC_IGAD



IGAD Climate Prediction and Applications Centre