

TEN DAY BULLETIN

Issue No: 202017

Dekad: 11-20 June 2020



Key messages

Forecast (11-20 June 2020)

- **Heavy rainfall above 200 mm** expected over central & western parts of South Sudan and western Ethiopia.
- **Hot weather** is expected over Sudan, Eritrea, Djibouti, northeastern Ethiopia and northern Somalia.

Observed rainfall (21-31 May 2020)

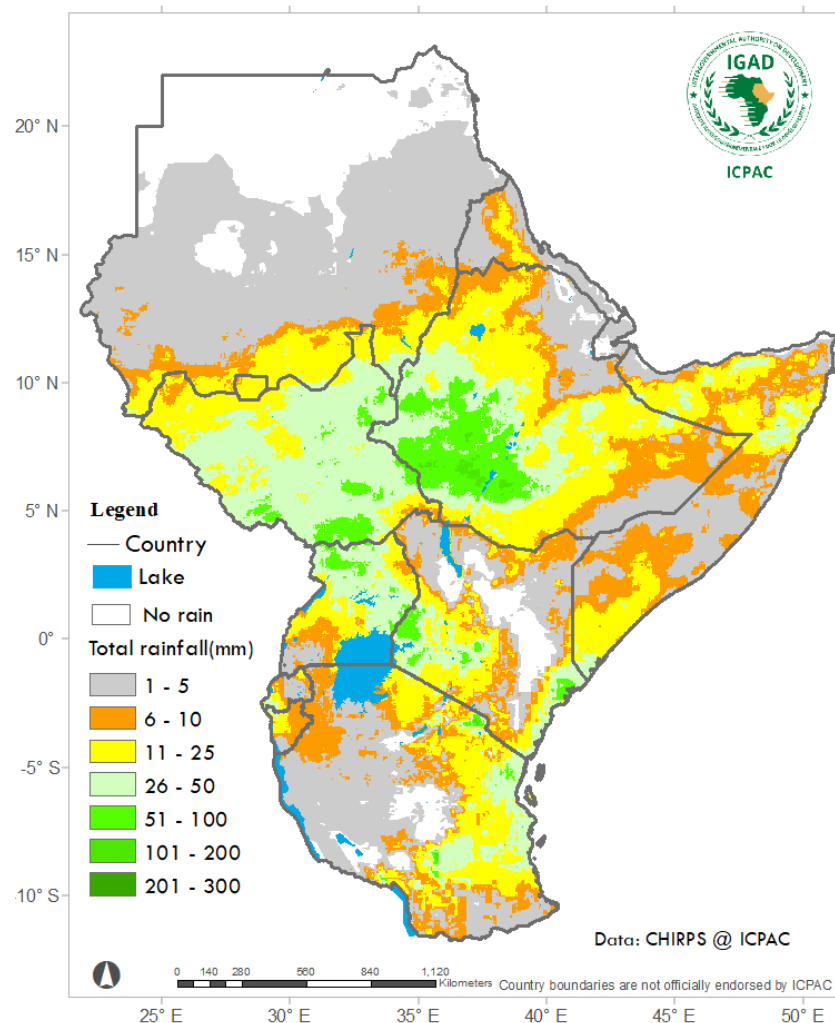
- **Severely wet** in isolated areas in Ethiopia's highland, southern parts of South Sudan, northern Somalia.
- **Unusual higher than average maximum temperatures** were observed in Kenya, Uganda, Rwanda, Burundi and Tanzania.
- **Colder than average minimum** temperatures over Sudan, Eritrea, southeastern Ethiopia, northeastern and southern Kenya, central Somalia and much of Tanzania.



ICPAC
IGAD Climate Prediction
& Applications Centre

Rainfall Forecast

11-20 June 2020



Range	Category
<1 mm	No rain
1 – 10 mm	Dry conditions
10 -50 mm	Light rain
50 -100 mm	Moderate rainfall
100 - 200 mm	Heavy Rainfall
> 200 mm	Very heavy

Forecast



Heavy rainfall above 200 mm is part of central & western parts of South Sudan and western Ethiopia.



Moderate rainfall in the range 50-200 mm is expected over much of South Sudan, southern parts of Sudan, western Ethiopia, parts of western & northwestern Kenya, parts of western and northern Uganda and parts of southwestern coastal Somalia.



Light rainfall less than 50 mm forecasted over southern regions of Sudan, parts of northwestern and eastern Ethiopia, Uganda, and parts of eastern, and southern Tanzania.



Much of Uganda, Rwanda, parts of Burundi, parts of western Kenya, southern and northern Somalia, southwest and northern Tanzania are **expected to remain dry**.

Alerts



Localized heavy rainfall is expected is part of central and western parts of South Sudan and western Ethiopia.

Expected Impacts



Positive impacts: Good and favorable conditions for agriculture in is part of central & western parts of South Sudan and western Ethiopia.

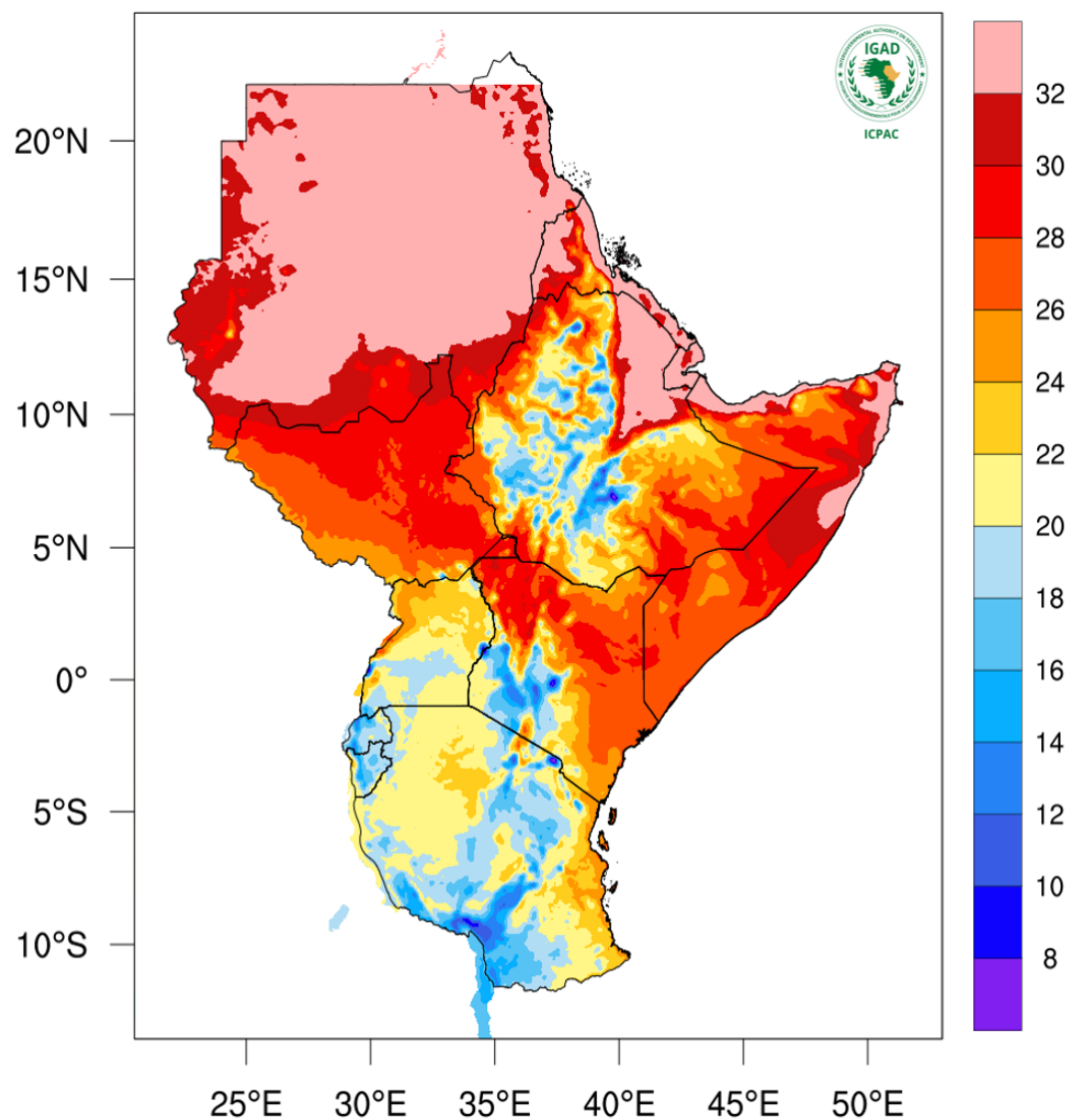
Negative impacts: floods and related impacts, water-related diseases can be expected in central & western parts of South Sudan and western Ethiopia.

Advisories



Farmers in western Ethiopia, central and northern South Sudan, and southern parts of Sudan advised to take the advantage of good and favorable conditions for agriculture.

Temperature Forecast 11-20 June 2020



Range	Category
< 22°C	Moderate to low temperature
22°C - 30°C	Moderate temperature
> 30°C	High temperature

Forecast



High temperatures above 32° C are expected in Sudan, Eritrea, Djibouti, northeastern Ethiopia & northern Somalia.



Moderate temperatures between 20 – 30° C are expected over South Sudan, much of Uganda, northwestern and coastal Tanzania, eastern and northwestern Kenya, much of Somalia, and southeastern and border areas of Ethiopia.



Low temperatures below 20° C expected over parts of central Ethiopia, central & western Kenya, parts of southern Uganda, Rwanda, Burundi, and southern & central Tanzania.

Alerts



High temperatures discomfort is expected over Sudan, Eritrea, Djibouti, northeastern Ethiopia & northern Somalia.

Expected Impacts



High temperatures discomfort is expected Sudan, Eritrea, Djibouti, northeastern Ethiopia & northern Somalia.

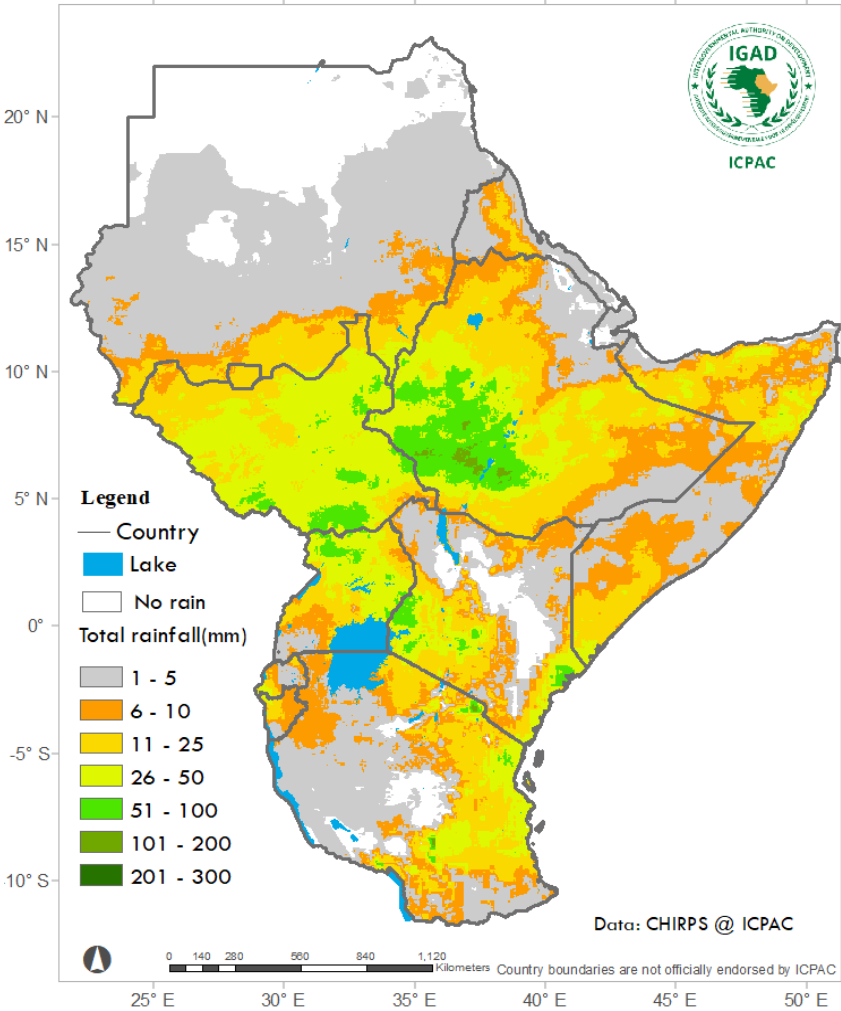
Advisories



People advised use cooling air conditions, shelters and shades

Observed rainfall (Total)

21-31 May 2020

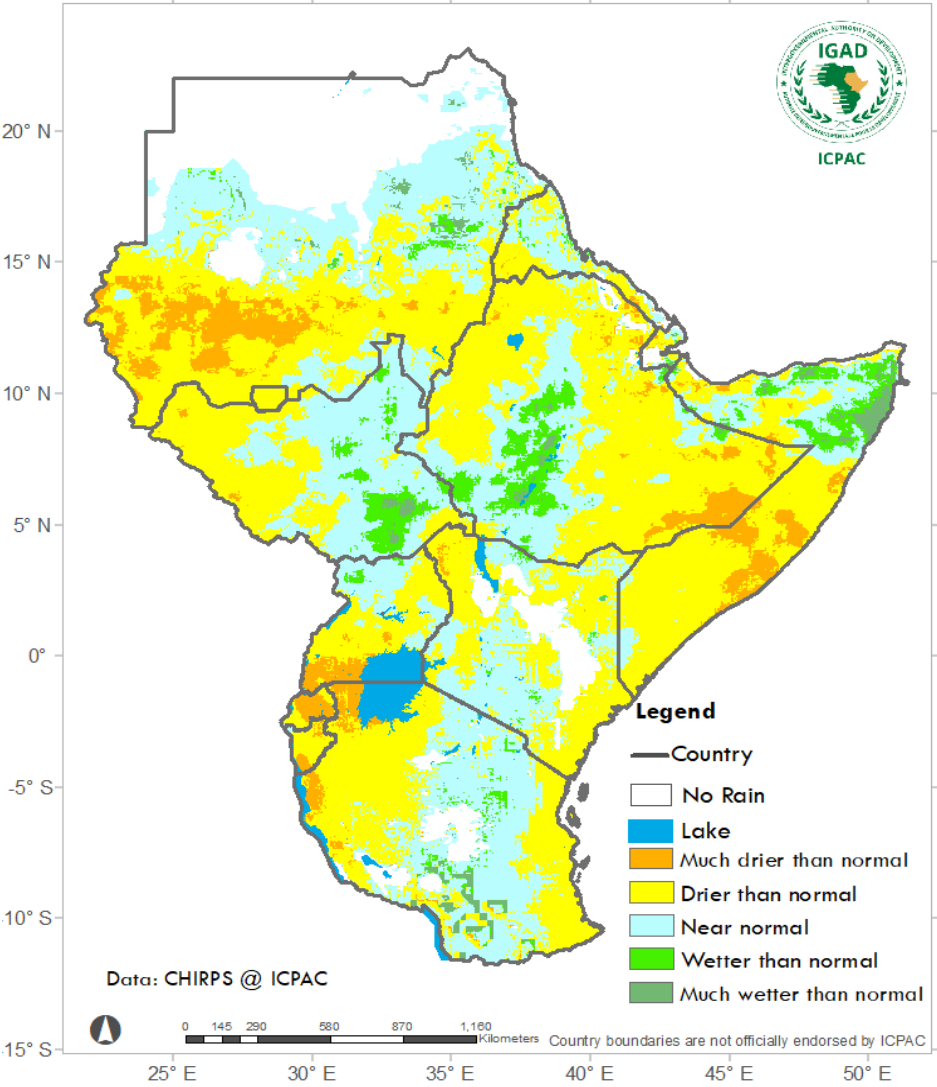


Range	Category
<1 mm	No rain
1 – 10 mm	Dry conditions
10 -50 mm	Light rain
50 -100 mm	Moderate rainfall
100 - 200 mm	Heavy Rainfall
> 200 mm	Very heavy

Total rainfall

- 1 – 10 mm** of rainfall observed in southern parts of Sudan, central Eritrea, much parts of eastern and northeastern Ethiopia, central Kenya, southern Somalia, much of Burundi, southwestern Rwanda, and northeastern Tanzania.
- 11 – 50 mm** of rainfall observed in much of South Sudan, western Ethiopia, and coastal parts of Tanzania.
- 51 - 100 mm** of rainfall observed in the southern parts of South Sudan, E high land of Ethiopia, western and coastal Kenya.
- 101 - 200 mm** of rainfall observed in Ethiopia's highland.
- Dry conditions (no rain)** over the northern part of Sudan, lower eastern and northern Kenya, most parts of central Tanzania.

Observed rainfall (Percent of normal) 21-31 May 2020



Range	Category
< 30 %	Much drier than normal
75 – 30 %	Drier than normal
75 -125 %	Near normal
125- 200 %	wetter than normal
> 200 %	Much water than normal

Observed rainfall as percentage of the long term mean



Severely dry (much drier than usual) conditions observed in central and western Sudan, southeastern Ethiopia, southern Uganda and Burundi, north and central Rwanda, central Somalia.



Moderate dry (drier than usual) conditions observed in central and southeastern Sudan, most parts of northwestern, central and eastern Ethiopia, western South Sudan, central Uganda, northwestern and coastal Kenya, southern and central Somalia, much parts of Burundi, northwestern Tanzania.



Normal rainfall conditions (usual average conditions) observed in central and eastern South Sudan, northern Uganda, southern and central Kenya, southern and northern Tanzania.



Wetter than normal conditions observed in Ethiopia high land, southern parts of South Sudan, northern Somalia.



Severely wet(much wetter than usual) conditions observed in isolated areas in Ethiopia high land, southern parts of South Sudan, northern Somalia.



Dry conditions observed in the northern part of Sudan, lower eastern and northern Kenya, central Tanzania.

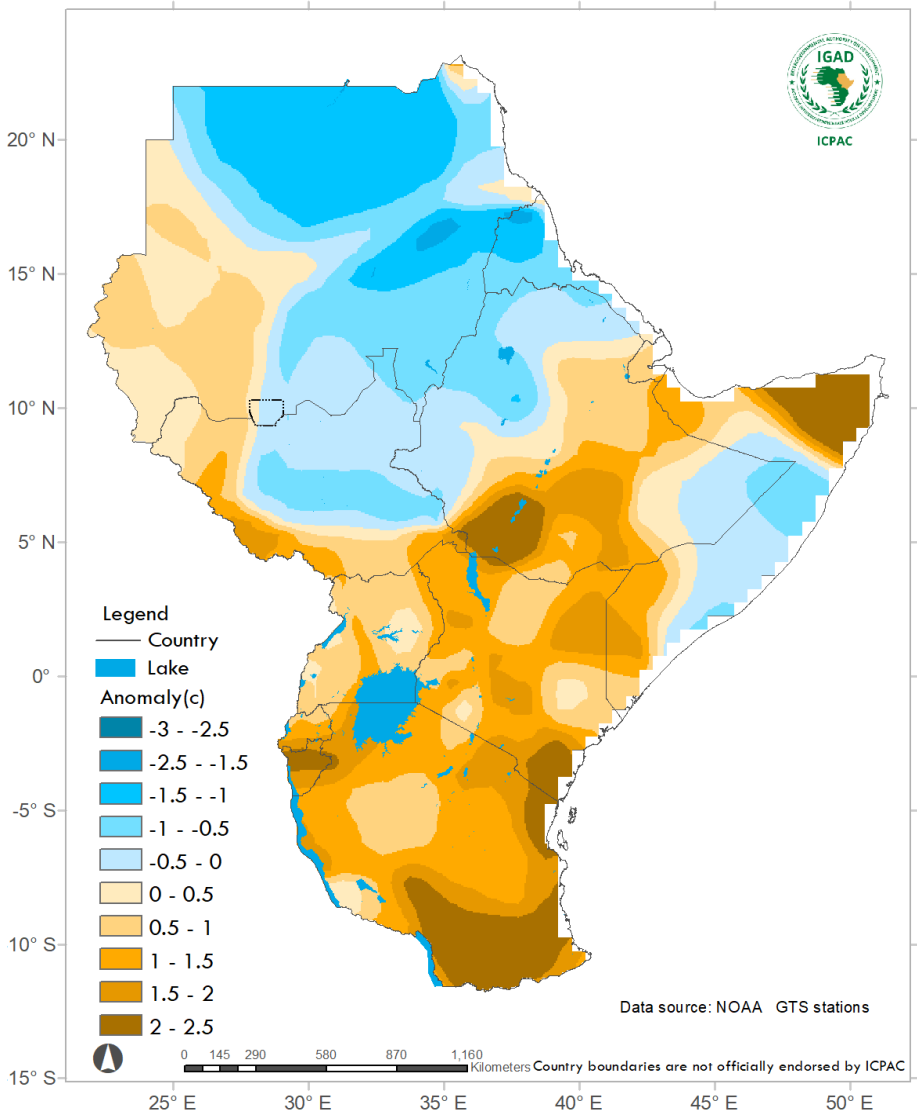
Impacts



Positive impacts: improvement in Agriculture, pastures, and water resources in much of South Sudan, and southern parts of Sudan.

Negative impacts: floods and related impacts reported in much of eastern South Sudan. Increase in water-related diseases such as cholera reported, and malaria reported in South Sudan

Observed Maximum Temperature anomalies 21-31 May 2020



Range	Category
> 0.6 °C	Warmer than normal
-0.5 - 0.5°C	Normal temperature
< - 0.6 °C	Cooler than normal

Maximum Temperature anomalies

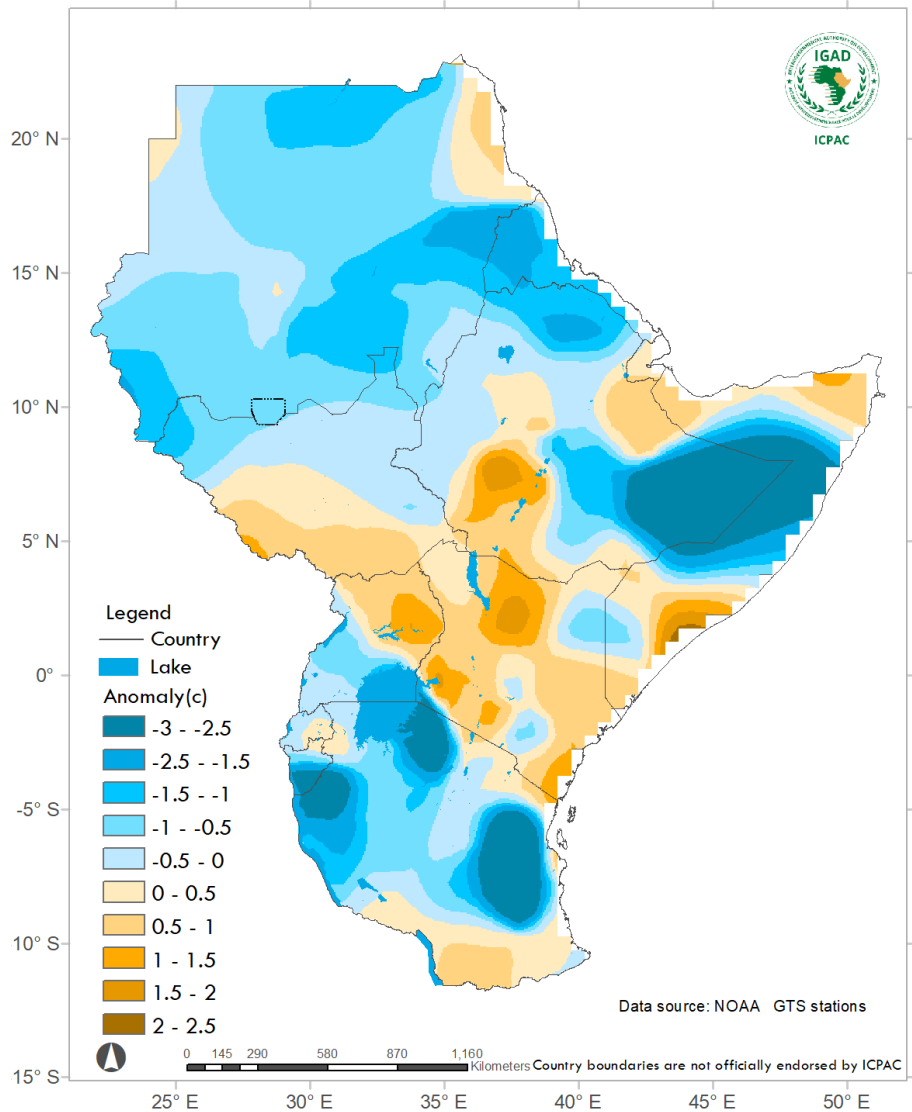


Warmer than usual maximum temperature recorded in western and southwestern Sudan, northeastern, central, southern and southwestern Ethiopia, northern Somalia, Kenya, Uganda, Rwanda, Burundi and Tanzania.




Colder than usual maximum temperature recorded in northern, central and eastern and southeastern Sudan, western and southeastern Ethiopia, central and eastern and southeastern parts o South Sudan and central Somalia.


Observed Minimum Temperature anomalies 21-31 May 2020



Range	Category
>0.6 °C	Warmer than normal
-0.5 - 0.5°C	Normal temperature
< - 0.6 °C	Cooler than normal

Minimum Temperature anomalies

- 

Warmer than usual minimum temperature recorded in Red Sea's coast of Sudan, northeastern and southwestern Ethiopia, south and southwestern parts of South Sudan, northern and northeastern Uganda, wide areas in Kenya, and southern Tanzania.
- 

Colder than usual minimum recorded over Sudan, Eretria, northern, western and southeastern Ethiopia, northeastern and southern Kenya, southern and western Uganda, much of Burundi and wide aras of Tanzania.



ICPAC

IGAD Climate Prediction
& Applications Centre

**Delivering Climate Services to the
Greater Horn of Africa**



@ICPAC_IGAD



@ICPAC_IGAD



IGAD Climate Prediction and Applications Centre