

TEN DAY BULLETIN

Issue No: 202018

Dekad: 21-30 June 2020



Key messages

Forecast (21-30 June 2020)

- Heavy rainfall above 200 mm is expected over western Ethiopia and northeastern South Sudan extending to southern border of Sudan.
- Hot weather is expected over most parts of Sudan, Eritrea, Djibouti, northeastern Ethiopia and northern Somalia.

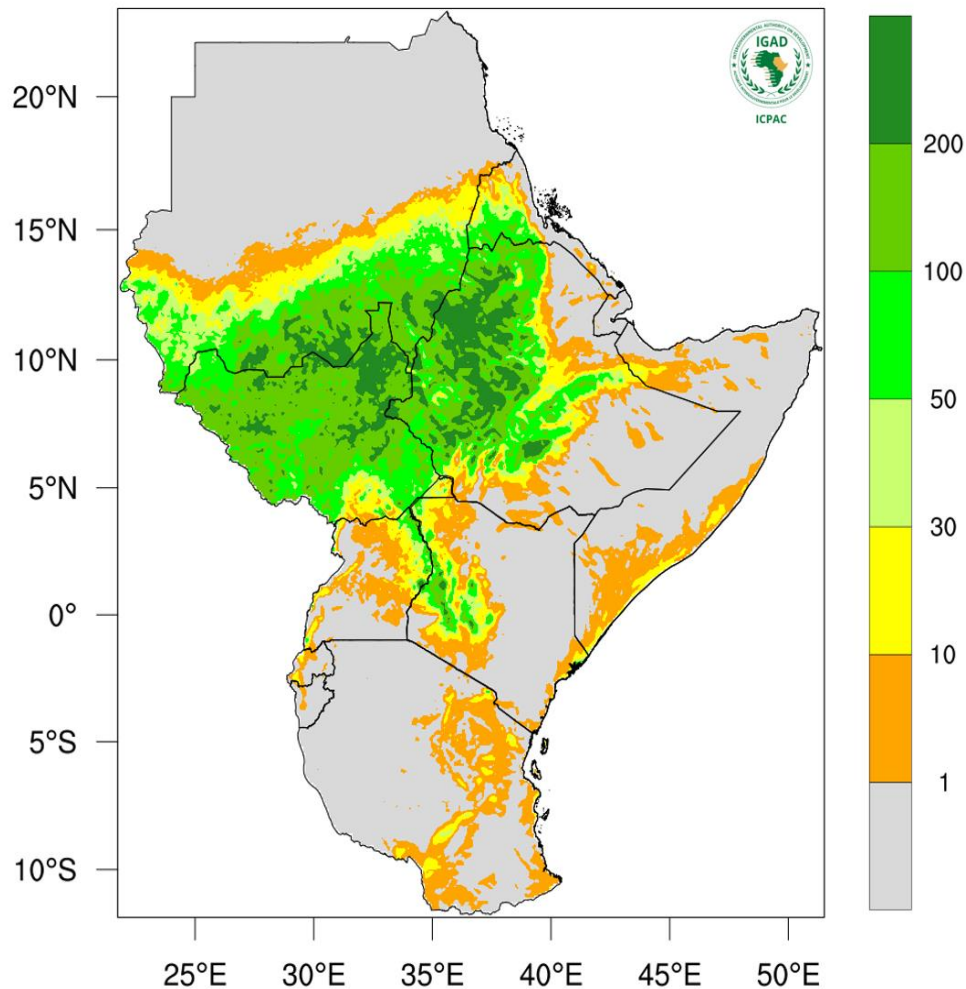
Observed rainfall (1-10 June 2020)

- **Severely wet** in eastern South Sudan, Ethiopia's highland, western and northwestern Kenya, central parts of Sudan, and northern coast of Somalia
- **Unusual higher than average maximum temperatures** were observed in most of Rwanda and Burundi and western Sudan, most parts of Kenya, Ethiopia and Tanzania.
- **Colder than average minimum** temperatures over northwestern Kenya, central Somalia and southern Tanzania.



ICPAC
IGAD Climate Prediction
& Applications Centre

Rainfall Forecast 21-30 June 2020



Range	Category
<1 mm	No rain
1 – 10 mm	Dry conditions
10 -50 mm	Light rain
50 -100 mm	Moderate rainfall
100 - 200 mm	Heavy Rainfall
> 200 mm	Very heavy

Forecast



Heavy rainfall above 200 mm is expected in parts of western Ethiopia and Eritrea, northeastern South Sudan extending to the southern border of Sudan.



Moderate rainfall in the range 50-200 mm is expected over much of South Sudan, much of southern parts of Sudan, much of central, western, and northern Ethiopia extending to the Eritrean border, parts of central and western Kenya.



Light rainfall less than 50 mm is expected over eastern Uganda, southern coastal Somalia, northwestern Eritrea, parts of western Rwanda, parts of northwestern, coastal Kenya, parts of central, and southern Tanzania.



Much of Eritrea, Djibouti, southeastern Ethiopia, northern & central Somalia, much of eastern Kenya, western and southern Uganda, much of Rwanda & Burundi, western and eastern Tanzania are **expected to remain dry**.

Alerts



Localized heavy rainfall is expected in parts of western Ethiopia, northeastern South Sudan extending to the southern border of Sudan.

Expected Impacts



Positive impacts: Good and favorable conditions for agriculture in most parts of South Sudan, southern parts of Sudan and western and northern Ethiopia. **Negative impacts:** floods and related impacts, the risk of water-related diseases is expected to increase in some parts of South Sudan and western Ethiopia.

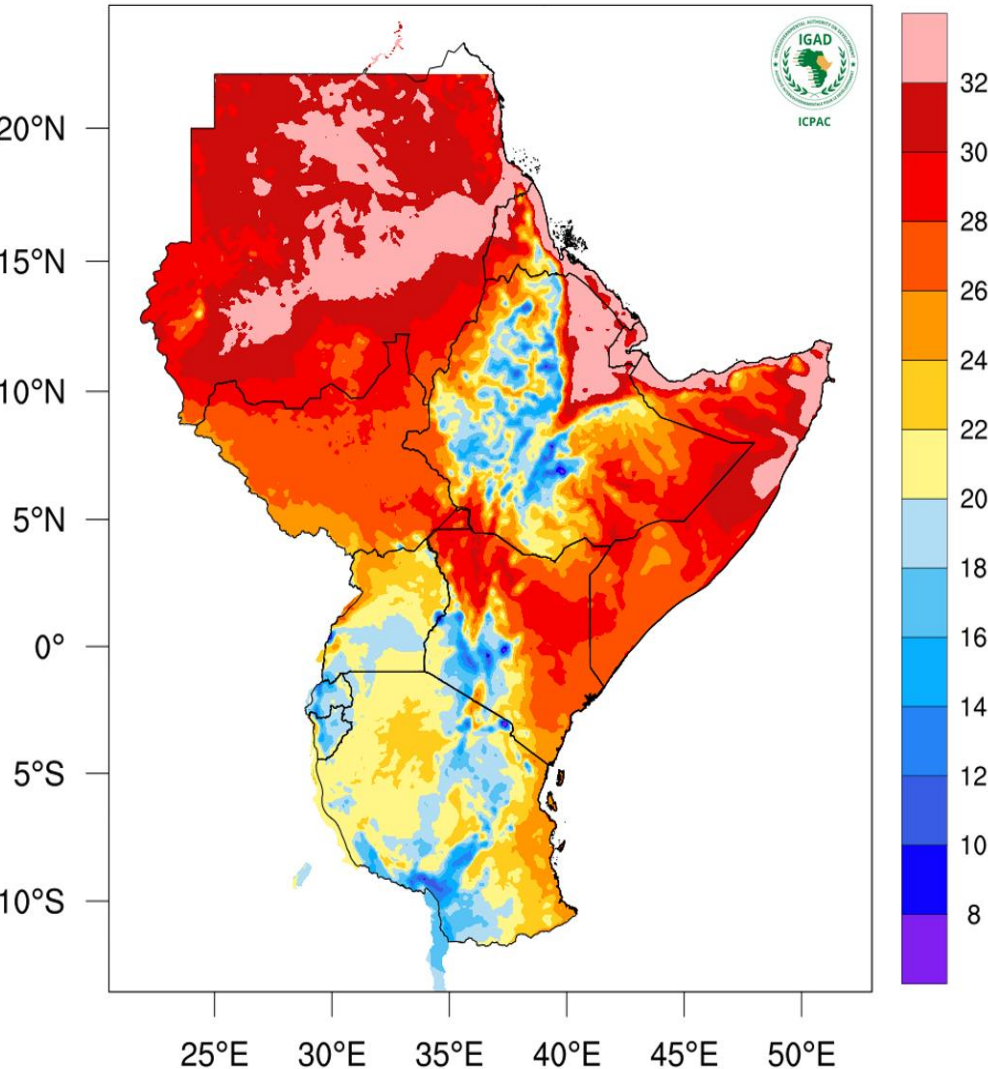
Advisories



Farmers in much parts of South Sudan southern parts of Sudan, western and northern Ethiopia advised to take advantage of good and favorable conditions for agriculture.

Temperature Forecast

21-30 June 2020



Range	Category
< 22°C	Moderate to low temperature
22°C - 30°C	Moderate temperature
> 30°C	High temperature

Forecast



High temperatures above 32°C are expected over parts of central, northern, and eastern Sudan, northeastern Ethiopia, Djibouti, coastal areas of Eritrea, and coastal areas of central and northern Somalia.



Moderate temperatures between 20–30°C are expected over much of Sudan, South Sudan, much of Kenya, Somalia, much of Uganda, and coastal, western, and northwestern Tanzania.



Low temperatures below 20°C are expected over regions in south western and northern Tanzania, central and southwestern Kenya, parts of southern Uganda, Rwanda, Burundi, and much of central and northern Ethiopia.

Alerts



High temperatures discomfort is expected over much of central and northern Sudan, coastal Eritrea, most of Djibouti, northeastern Ethiopia.

Expected Impacts



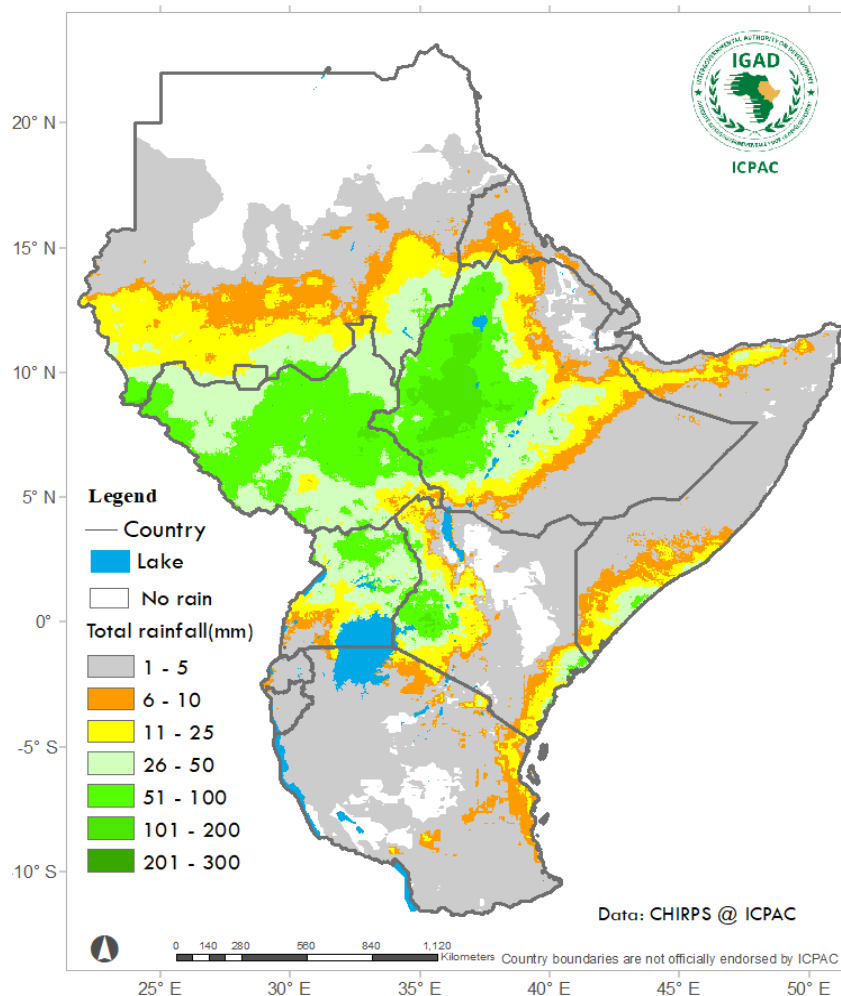
High temperatures discomfort is expected much of Sudan, Eritrea, Djibouti, northeastern Ethiopia.

Advisories



People advised use air conditions, shelters and shades.

Observed rainfall (Total) 1-10 June 2020



Range	Category
<1 mm	No rain
1 – 10 mm	Dry conditions
10 -50 mm	Light rain
50 -100 mm	Moderate rainfall
100 - 200 mm	Heavy Rainfall
> 200 mm	Very heavy

Total rainfall



1 – 10 mm of rainfall observed in southern parts of Sudan, southwestern Eritrea, most parts of eastern , northeastern Ethiopia, southwestern Uganda, central and coastal parts of Kenya, southern coast of Somalia, and coastal parts of Tanzania.



11 – 50 mm of rainfall observed in southern parts of Sudan, much of South Sudan, central Uganda, central, northern, and western Ethiopia.



51 - 100 mm of rainfall observed in many parts of South Sudan, northern Uganda, high land of Ethiopia, and western Kenya.

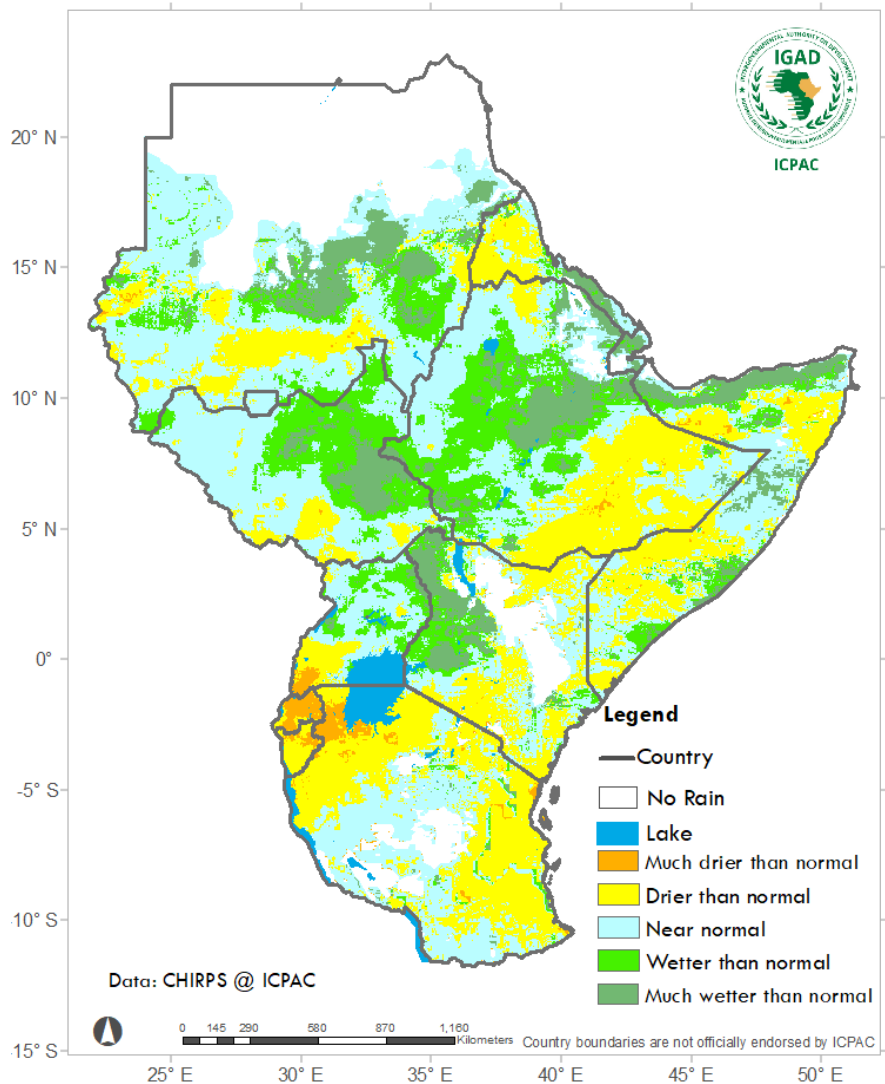


101 - 200 mm of rainfall observed in Ethiopia's highland.



Dry conditions (no rain) over the northern part of Sudan, lower eastern and northern Kenya, northeastern Ethiopia, most parts of central Tanzania.

Observed rainfall (Percent of normal) 1-10 June 2020



Range	Category
< 30 %	Much drier than normal
30 - 75 %	Drier than normal
75 - 125 %	Near normal
125 - 200 %	wetter than normal
> 200 %	Much wetter than normal

Observed rainfall as percentage of the long-term mean



Severely dry (much drier than usual) conditions observed in southwestern Uganda, most parts Rwanda and northern Tanzania.



Moderate dry (drier than usual) conditions observed in north Eritrea, eastern Ethiopia, southwestern Uganda, most parts of Burundi, northern and coastal parts of Tanzania.



Normal rainfall conditions (usual average conditions) observed in many parts of Sudan, western and southern parts of South Sudan, central Uganda, northern and northwestern Ethiopia.



Wetter than normal conditions observed in western Kenya, central Ethiopia, northern and eastern South Sudan, northern coastal parts of Somalia.



Severely wet (much wetter than usual) conditions observed in western and northwestern Kenya, eastern South Sudan, central parts of both Ethiopia and Sudan, and the northern coast of Somalia.



Dry conditions observed in the northern part of Sudan, lower eastern and northern Kenya, northeastern Ethiopia, and most parts of central Tanzania.

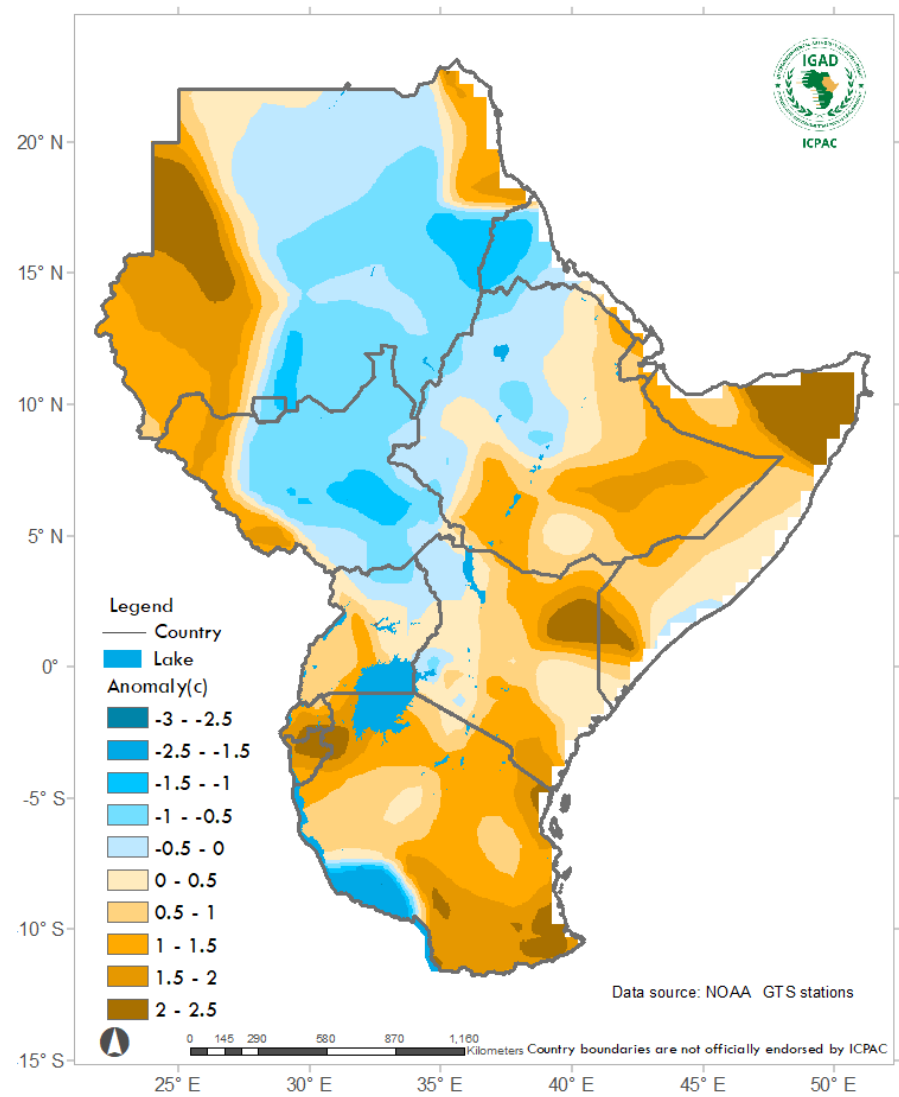
Impacts



Positive impacts: improvement in Agriculture, pastures, and water resources in much of South Sudan.


Negative impacts: floods and related impacts reported in much of eastern South Sudan.

Observed Maximum Temperature anomalies 1-10 June 2020



Range	Category
> 0.6 °C	Warmer than normal
-0.5 - 0.5°C	Normal temperature
< - 0.6 °C	Cooler than normal

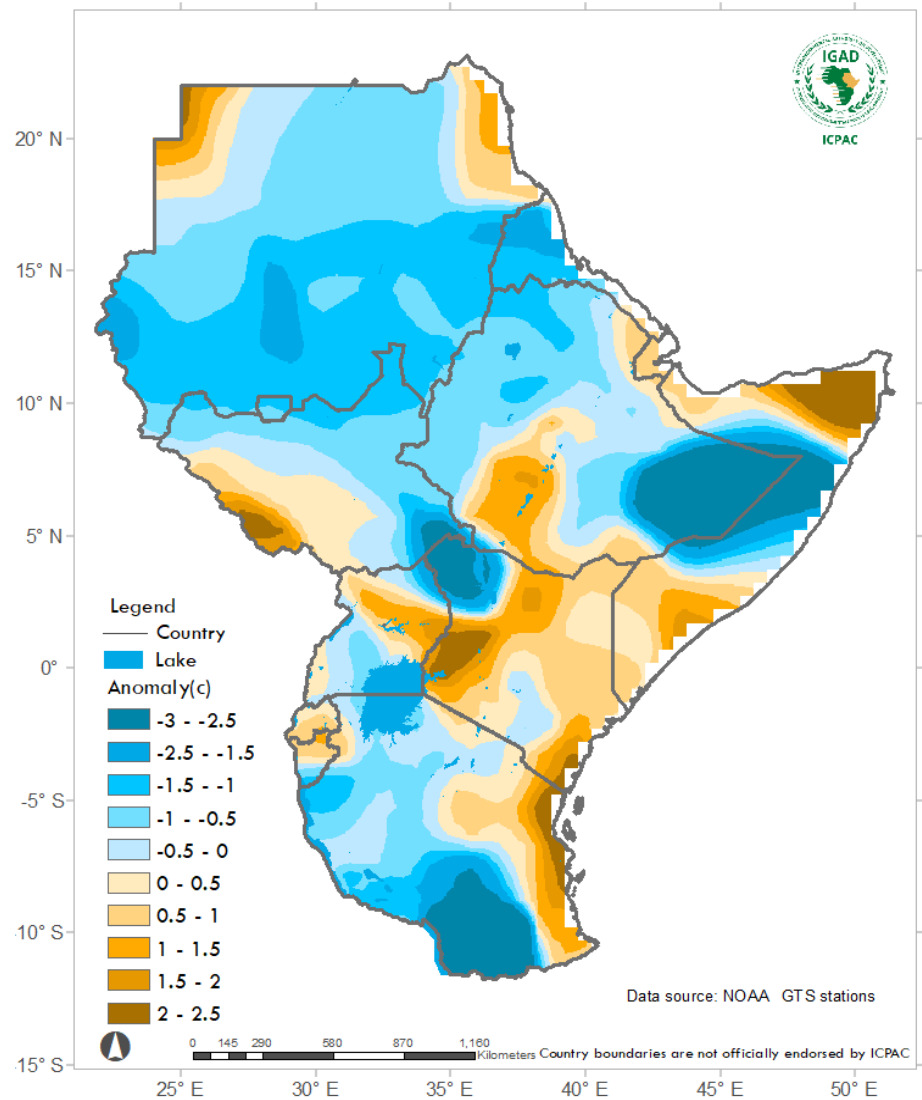
Maximum Temperature anomalies

- 

Warmer than usual maximum temperature recorded in northeastern, western and southwestern Sudan, western South Sudan, western, central and southwestern Uganda, northeastern, central, southern and southwestern Ethiopia, most parts of Somalia, Kenya, Tanzania, everywhere in Rwanda and Burundi.
- 

Colder than usual maximum temperature recorded in northern, central, eastern, and southeastern Sudan, western, central, and northern Ethiopia, southeastern, central, and northeastern South Sudan, and southwestern Tanzania.

Observed Minimum Temperature anomalies 1-10 June 2020



Range	Category
>0.6°C	Warmer than normal
-0.5 - 0.5°C	Normal temperature
< - 0.6°C	Cooler than normal

Minimum Temperature anomalies



Warmer than usual minimum temperature recorded in Red Sea's coast and northwestern of Sudan, southwestern South Sudan, northern Somalia, southwestern Ethiopia, many parts of western, coastal, and northern parts of Kenya, northern Burundi, most of Rwanda, and coastal parts of Tanzania.



Colder than usual minimum recorded over most parts of Sudan and of Eretria, northern and southeastern South Sudan, western, northern and eastern Ethiopia, central Somalia, northwestern Kenya, northern, central western, and southern parts of Tanzania.



ICPAC

IGAD Climate Prediction
& Applications Centre

**Delivering Climate Services to the
Greater Horn of Africa**



@ICPAC_IGAD



@ICPAC_IGAD



IGAD Climate Prediction and Applications Centre