



# GMES AND AFRICA



ICPAC

## AGRICULTURE SEASONAL MONITORING, EARLY WARNING AND ASSESSMENT

Kenneth Kemucie Mwangi

Thematic Assistant: Agriculture and Environment Monitoring

IGAD Climate Prediction and Applications Centre

kmwangi@icpac.net

### Eastern Africa Crop Monitor

Access & Download Scan Code



#### ABSTRACT

Approximately 60% of the Horn of Africa region is under Arid and Semi-Arid Lands (ASALs). Close to 80% of the total population dependent on agriculture which is mainly subsistence and rain-fed. However, rainfall is uneven, inadequate and unreliable across most part of the region with recurrent droughts observed in a larger part of the region. Climatic analysis have shown that droughts are becoming more frequent in the region. This has been causing frequent food insecurity due to livelihoods being affected. In the IGAD State of the Region report (2016), agriculture's important role in food security, socio-economic development and even socio-political stability is highlighted. Thus with increasing droughts there has been an increasing trend of resource caused conflict and human migration.

#### OBJECTIVE

To provide agriculture and related information for improved monitoring and assessing crop conditions, forecast food production and status of food security to issue timely early warning information to decision makers in Eastern Africa.

#### AREA COVERED



#### METHODS

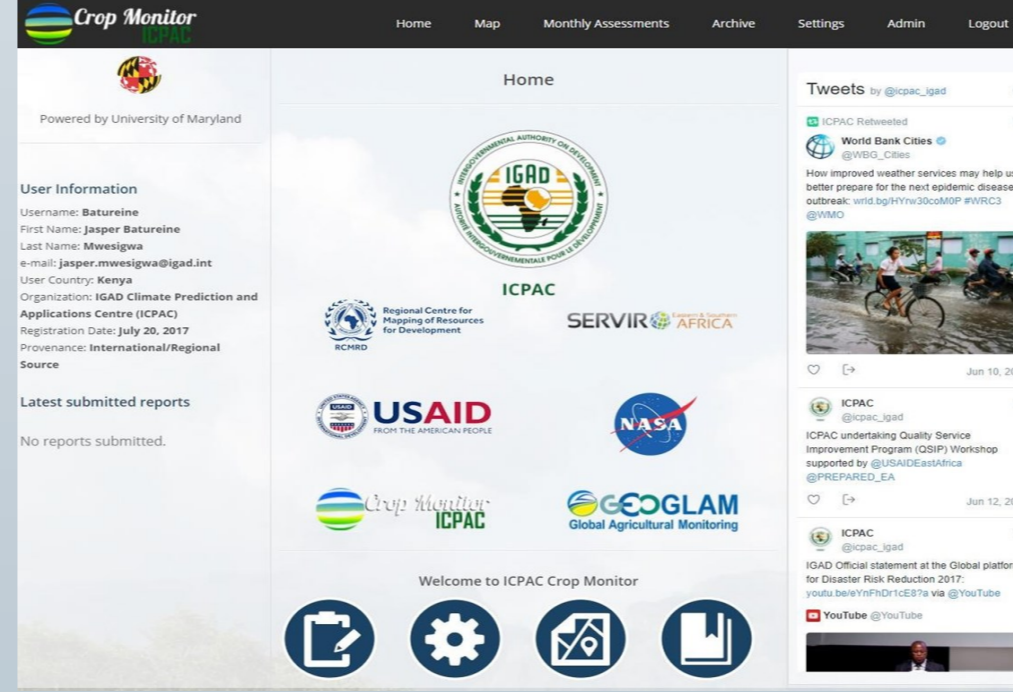
Regional Crop Monitor Information Network (Multi sourced information for crop conditions)

**Satellite Derived Information**

**National Crop Monitoring Agencies**

**Field Observation of Crops**  
Pests? Disease? Expected Stage?

Crop Conditions Reporting Dashboard



Monthly Reports on Crop Conditions

**Legend:**

- Exceptional: Conditions are much better than average\* at time of reporting. This label is used only during the grain-filling through harvest stages.
- Favourable: Conditions range from slightly below to slightly above average at reporting time.
- Watch: Conditions are not far from average but there is a potential risk to final production. There is still time and possibility for the crop to recover to average conditions if the ground situation improves. This label is only used during the planting/early vegetative and the vegetative-reproductive stages.
- Poor: Crop conditions are well below average. Crop yields are likely to be 10-25% below average. This is used when crops are stunted and are not likely to recover, and impact on production is likely.
- Failure: Crop conditions are extremely poor. Crop yields are likely to be 25% or more below average.

National & Regional Maps Reports & Statistics

**Report on Drivers of Negative Conditions**

**Drivers:** Wet, Dry, Hot, Cool, Extreme Event, Pest & Disease, Delayed Onset, Socio-economic

**30-50% Projected Reduction in Major Crops Yield in Uganda and Kenya**

**25-30Days Average March-May Rainfall Delay in Equatorial Region**

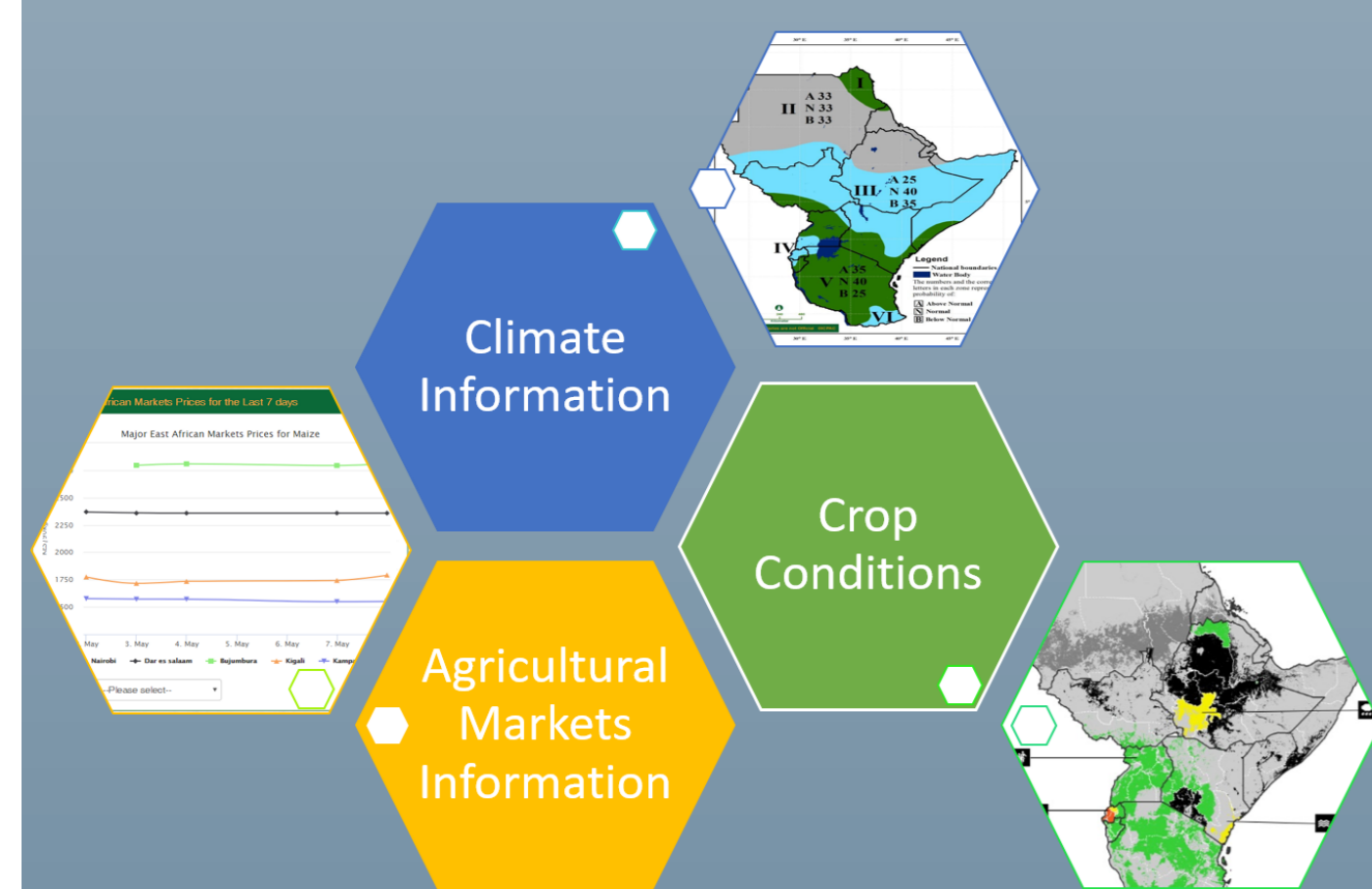
Crops of National Importance



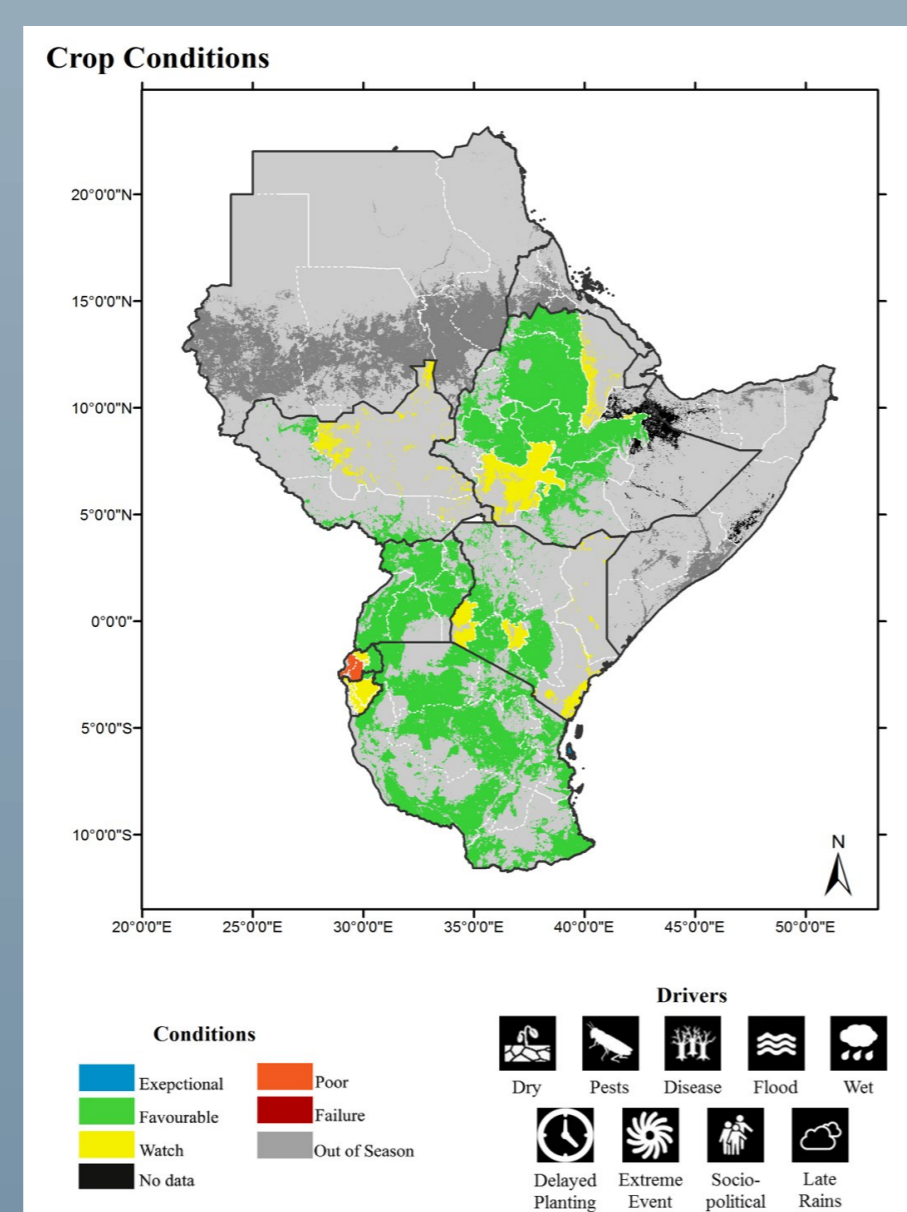
**Crop Calendar:**  
Planting-Early Vegetative, Vegetative-Reproductive, Ripening Through Harvest, Harvest (End of Season), Out of Season

#### RESULTS: Information for Seasonal Monitoring and Early Warning

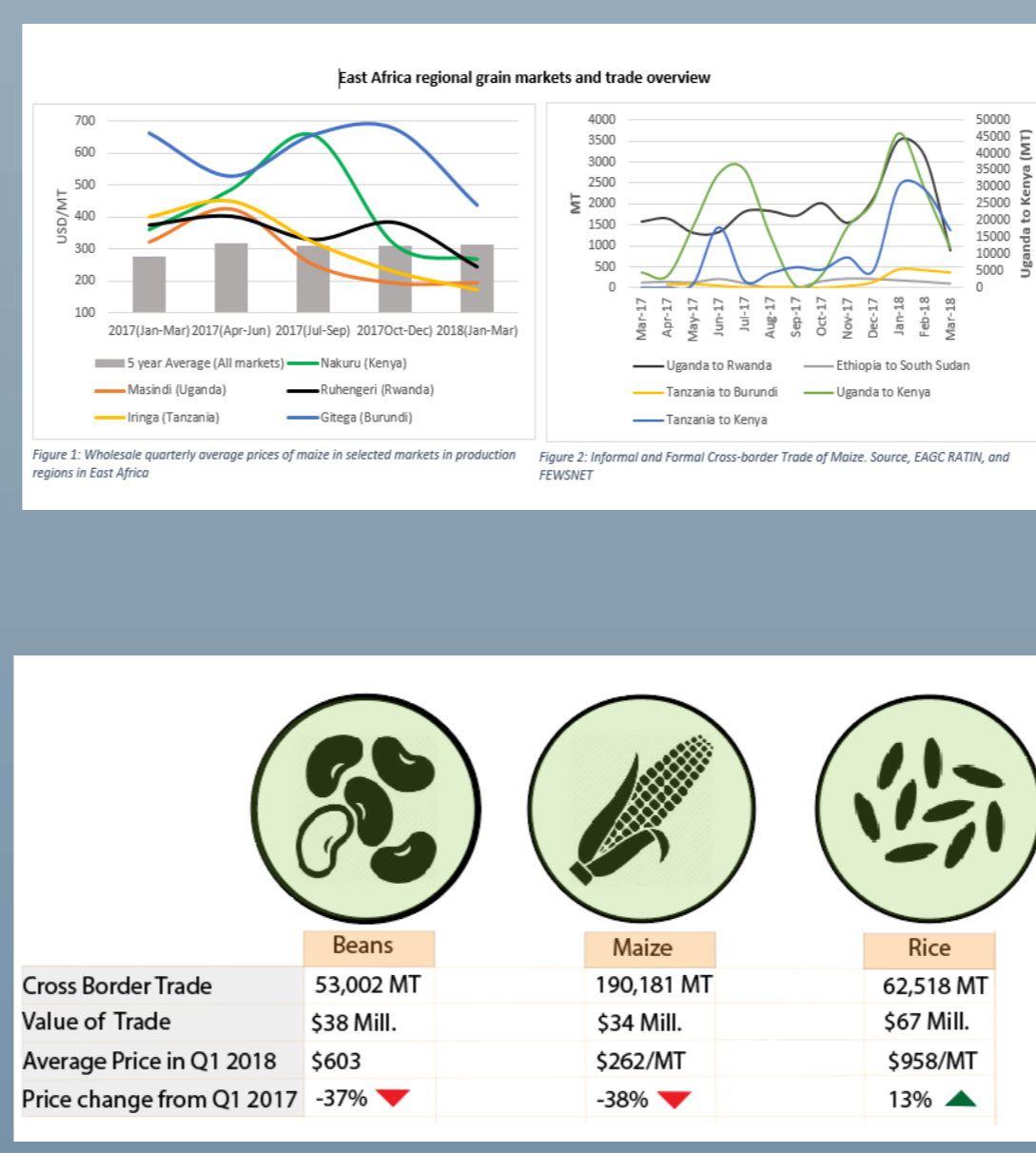
Components of Regional Crop Early Warning



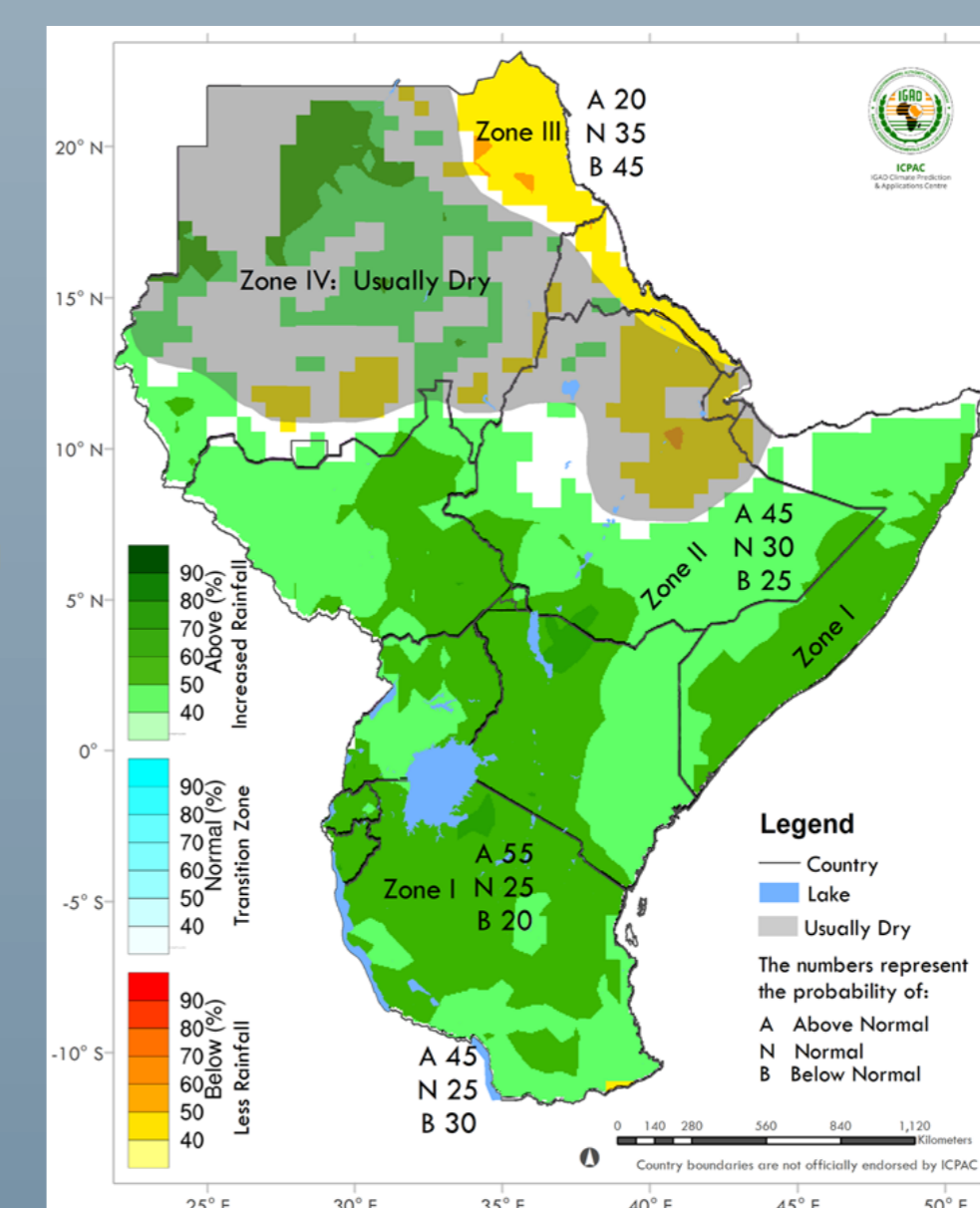
Crop Conditions



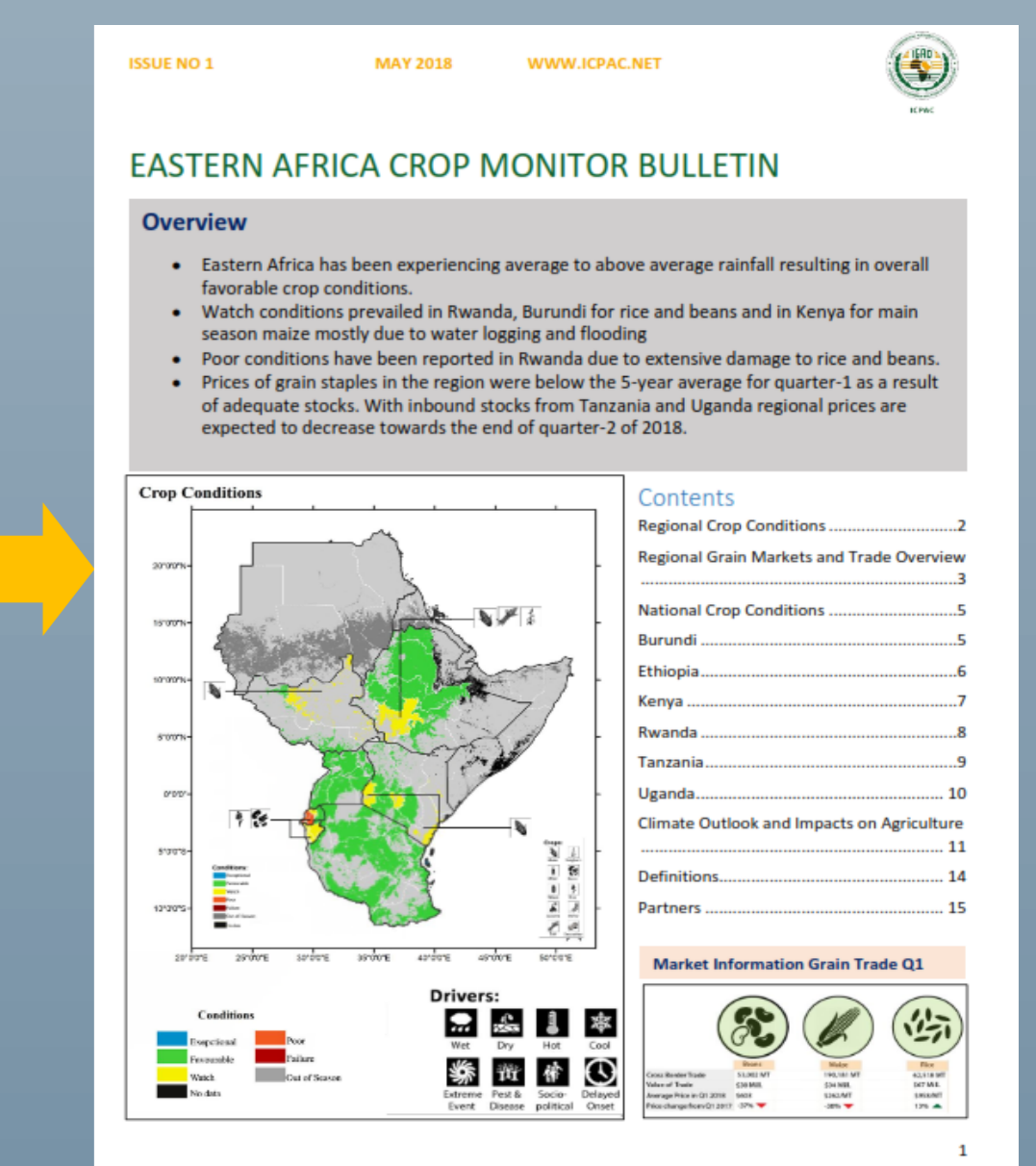
Grain Trade Commodities in Major Production Markets



Regional Seasonal Climate Outlook



Seasonal Eastern Africa Crop Monitor Bulletin & Early Warning Info.



#### DISCUSSION & CONCLUSION

The Eastern Africa Crop Monitor continues to gain a range of information users. Regional Food Security Nutrition Working Group uses the information contained to develop advisories on that status of food security in their monthly updates. In April 2019 ICPAC lead a multi-sector organization action call for early action in response to developing drought conditions in the region using Crop Monitor as one of the information sources. There is a user demand in having food production of the main crops to guide decision makers on exact interventions. The project is currently exploring EO solutions of crop yield estimation and forecast for early action and improved planning. The service is enhancing the development of actionable early warning information.

GMES & Africa Project

IGAD Climate Prediction and Applications Centre, Nairobi KENYA

Tel: +254 20 351 4426

Email: gmes@icpac.net www.igad.int |www.icpac.net

Partners

