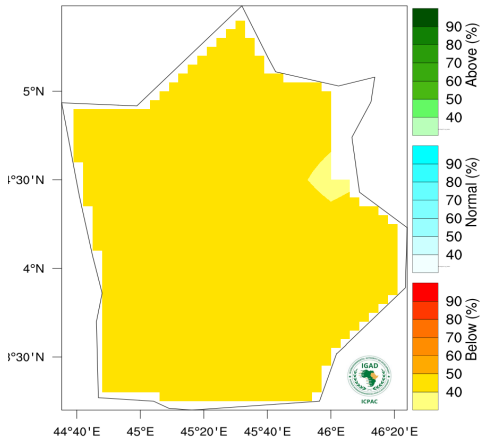




ICPAC
IGAD Climate Prediction
& Applications Centre

Galguduud Region, Galmudug

Tallo Bixinta La Xidhiidha
Cimilada ee Bilaha Oktoobar-
Nofeembar-
Diisambar (OND) 2020



XAALADA SAADAASHA CIMILADA EE OKTOOBAR –NOFEEMBAR – DIISAMBAR (OND) 2020

- Waxaa la saadaalinayaa in ay jirto in uu roobka deyrta ee deegaanada Galmudug uu ka hooseeyo intii caadiga ahayd ee ay heli jireen bilaha October ilaa Diisambar
- Waxaa la saadaalinayaa in uu roobku bilawdo inta u dhaxaysa 11 ka ilaa 31ka Bisha Octoobar.
- La socoshada roobabka wata dayablaha iyo digniinta hore ayaa la soo saari doonaa xilli roobaadkan kolba sida uu xaalku yahay.

XAALKA NOLOLEED EE BULSHADA IYO TALLOYINKA QAYBAHA

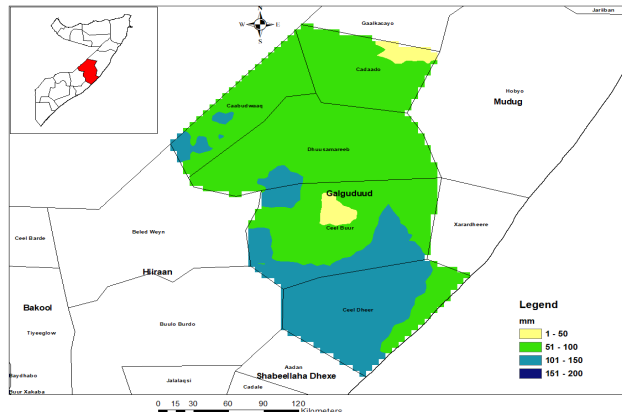
BEERAHA



Waxaa wasaarada Beeraha lagula talinayaa:

- In ay kordhiyaan talo bixinta la xidhiidha fidinta beeraha ee ay ka mid yihiin Gashiga beeraha(Qalabka , midhaha tayada leh, daawooyinka cayayaanka iyo bacriminta si ay beeralayda si fuud ugu helaan waxna u beertaan.
- In ay kala shaqayso hayada cuntada aduunka iyo daneeyayaasha kale tababarka beeralayda ee ka hortaga ayaxa iyo xakayantiisa si beeralayda loogu dhiiri galiyo in ay wax beertaan.

Beeralayda waxaa lagula talinayaa:



GALGUDUUD REGION, GALMUDUG

Tallo Bixinta La Xidhiidha Cimilada ee Bilaha Oktoobar-Nofeembar -Diisambar (OND) 2020



- In ay wada shaqayn jooqta ah la yeeshaan khabiirada beeraha, waxaana lagula talinayaa in ay beertaa midhaha hore u bislaada ee u adkaysta abaarta.
- In ay kala tashadaan xafiiska beeraha ee degmada arimaha la xidhiidha cudurada ku dahaca midhaha iyo maarayntiisa xilli beereadkan
- In ay kala tashadaan dawladda hoose fulinta hawlaha ilaalinta caradda iyo biyaha ee ay ka midyihiin, weecinta daadadka, berkadaha dhisida naxarada iyo biyo qabatinada yaryar.
- In ay isticmaalaan bacriminta dabiiciga ah ee ay ka mid tahay digada xoolaha si ay u wanaajiso nafaqada carrada.
- Beeralaydu waa in ay si dhaw ula socdaan xaalada ayaxa saxaraha, kana wargaliyaan dawladda ama khabiirada beeraha si talaabo ku haboon looga qaado ayaxa saxaraha;
- Wasaarada Beeraha iyo daniyayaasha Horumarka ka shaqeeya waxaa lagula talinayaa in ay si dhaw ula socdaa xaaladaha beeralayda dhaqaalana u raadiyaan si ay cunto qaybin ugu sameeyaan beeralayda markii loo baahdo.



XOOLAHA

Xoolo dhaqato-beeralayda waxa lagu dhiirio galinayaa;

- Waa in ay beertaa calafka xoolaha iyo Cawska ,kaydsadaana marka cawsku soo go'o.
- Waxaa kale oo xoola-dhaqatada lagula talinayaa in ay si dhaw ula shaqeeyaan wasaarada xoolaha si ay u xaqiijiyaan ka hortaga iyo daaweynta xanuunada xoolaha, kaydinta daawooyinka xoolaha iyo talaalka waktiga ku haboon ee xoolaha;
- In ay ilaaliyaan dhul daaqsimeedka iyaga oo dhul daaqsimeedka u isticmaalaya si habsami leh.Practice rangeland rehabilitation through
- In ay iibiyaa waxsoosaarkooda saayidka ahsida caanaha iyo hilibka.
- Wasaarada Xoolaha iyo dhirta waxaa lagula talinayaaMiniste:
- In ay dib u habayn ku sameeyaa ballayada iyo ceelasha biyaha iyo berkada ku yaala dhulka xoola-dhaqatadu degantahay si loo xaqiijiyo in ay biyo helaan.
- In laga wacyigaliyo Bulshada xoola dhaqatada socodka badan si ay u



yareeyaan fiditaanka cudurada;

- In la sameeyo xarumo caafimaadka xoolaha iyada oo lala kaashanayo daneeyasaha ka shaqeeya arimaha xoolaha
- In la kordhiyo wacyigalinta la xidhiidha habsami u daweynta xoolaha.

Ogaysiis Muhiim ah

- **Xogta halkan ku xusan waxa laga helay Xafiiska sadaasha hawada ee dawlada soomaliya ee bilaha October, November iyo December.**
- **Saadallintu waa mid ka duushay xaalada jira waxaana dhacda in isbedel ku yimaado;**
- **Xogta la socota talo bixinta waa in loo isticmaalaa iyada oo lala soconaya sadaasha ay soo saari doonto Xafiiska Saadasha wixii isbedel ahna lagu daro; hawada ee SomaliaT**
- **Bulshada waxaa lagula talinaya in ay la socdaa xogaha maalinlaha, toban kii cisho iyo bilaha ah ee uu soo saaro xafiiska saadaasha hawada ee Somalia**

Wixii faahfaahin intaa dheer kala xidhiidh:

Somali Meteorological Service,

TELEPHONE: +252634446546

E-MAIL: abdirashid.jama@hotmail.com

