

**IGAD Bi-annual Meeting on Food Security and Nutrition
in the Context of Desert Locust Invasion, COVID-19 Pandemic and Widespread Flooding**

(Ethiopia) Update on Desert Locusts

(Esayas Lemma)

**OLINE DISCUSSION
TUESDAY 10 NOVEMBER 2020**

CURRENT SITUATION & RESPONSE

- The invasion of Desert locust turned from Southern part of Ethiopia to North East part of Ethiopia
- Major crop affected during this time is sorghum crop at reproductive and maturity stage
- Nearly DL were observed on 789 K ha of land in which 589 k Ha were controled

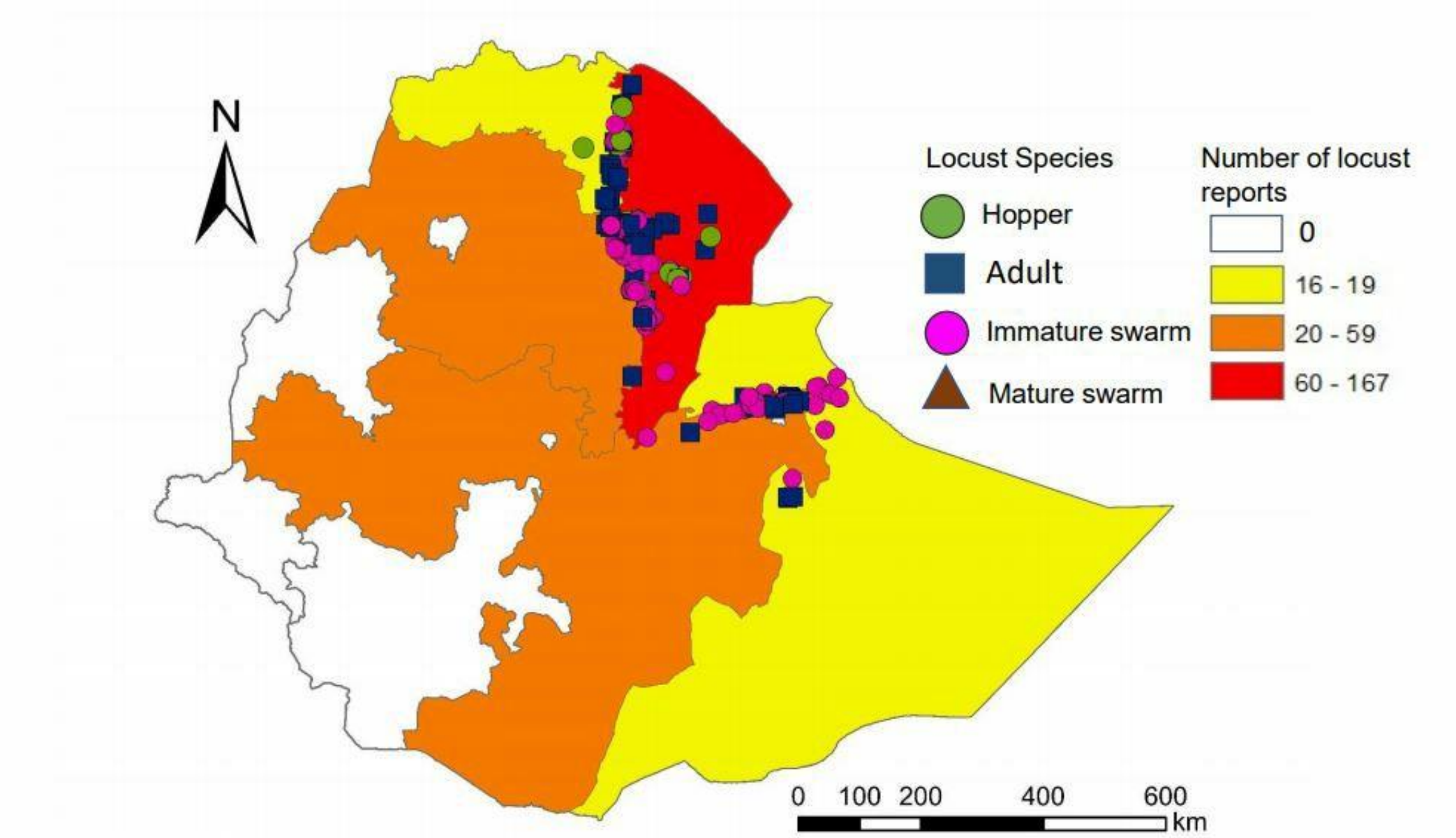
(Place picture



| ተ.ቁ | Month | Assessment(ha) | Observed (ha) | Control (ha) | | | Chemical (lit) |
|-----|---------|----------------|---------------|--------------|---------|----------|----------------|
| | | | | Sprayer | Plane | Total | |
| 1 | June'19 | 754 | 0 | 0 | 0 | 0 | 0 |
| 2 | July | 6,078 | 585 | 0 | 0 | 0 | 0 |
| 3 | Aug | 14,231 | 7,795 | 92.75 | 4,446 | 4,538.2 | 677 |
| 4 | Sep | 25,498 | 9,509 | 8,553.25 | 0 | 8,553.25 | 2,015 |
| 5 | Oct | 38,694 | 13,566 | 10,746 | 3,325 | 14,071 | 4,634 |
| 6 | Nov | 18,630 | 12,599 | 1,932 | 8,640 | 10,572 | 10,323 |
| 7 | Dec | 21,990 | 10,944 | 314 | 10,330 | 10,644 | 9,927 |
| 8 | Jan | 55,750 | 33,650 | 0 | 33,650 | 33,650 | 33,450 |
| 9 | Feb | 51,512 | 33,748 | 2,244.5 | 29,700 | 31,944.5 | 31,045.5 |
| 10 | Mar | 91,872 | 69,106 | 17,568.5 | 54,330 | 71,898.5 | 63,060.5 |
| 11 | Apr | 182,502 | 99,138 | 9,216 | 87,573 | 96,789 | 98,139 |
| 12 | May | 166,083 | 38,722 | 15,417 | 18,090 | 33,507 | 32,735 |
| 13 | June'20 | 184,253 | 57,111 | 15,298 | 38,959 | 54,257 | 47,693 |
| 14 | July | 124,380 | 38,630 | 222 | 33,712 | 33,934 | 33,934 |
| 15 | Aug | 137,854 | 44,676 | 3,382 | 30,863 | 34,245 | 34,215 |
| 17 | Sept | 528,016 | 183,152 | 32,830 | 68,750 | 101,581 | 101,581 |
| 18 | Oct-now | 289,839 | 121,614 | 6,240 | 41,750 | 47,954 | 47,954 |
| | Total | 1,948,958 | 789,182 | 125,912 | 464,118 | 589,993 | 553,215 |

CONTROL & COORDINATION MEASURES

- surveillance,
 - Surveillance is done around the eastern part of the nation specially Somali and Afar regions using Helicopters and vehicles
 - Coordination units are found at Jijiga, Semera, Diredawa, Kombloecha
- monitoring
 - Effectiveness of the control measures, supply of chemicals and coordination works are monitored by state ministers teams which is national coordinated by the agriculture state minister and the Minister
 - IN addition to the Elocust3m app a whatsapp reporting and information system is implemented
- Control
 - 4 helicopter and 2 aircrafts are used for spraying
 - Nearly 88 Vehicles are on operation for vehicle mounted sprayer and monitoring operation from MoA and other Minister offices
- Funding Needed (USD: 130 Miillion USD)
- Funding Received (USD): 67 million USD
- Funding Gaps (USD): 73 Million USD (more needed for Livelihood)

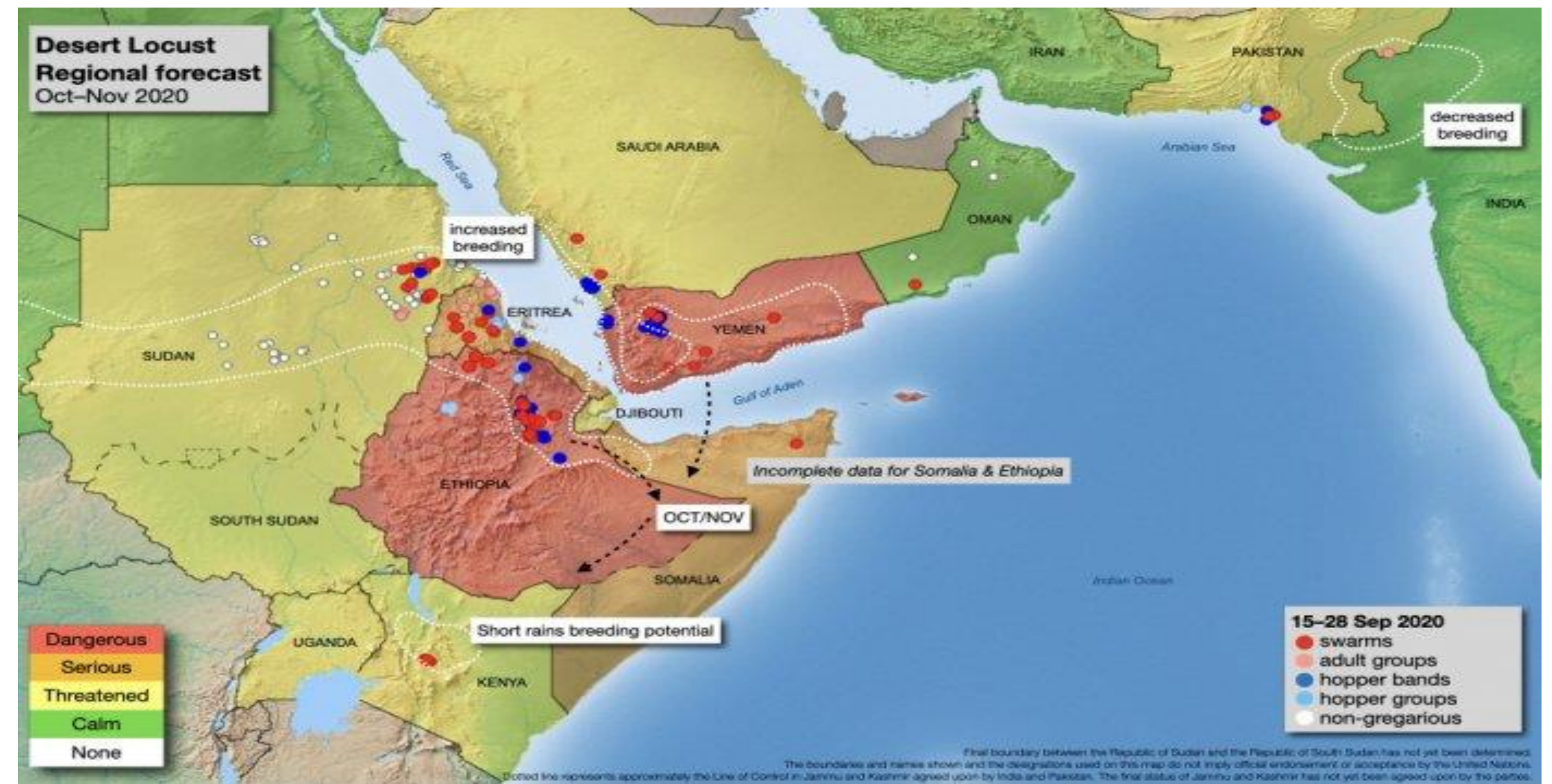
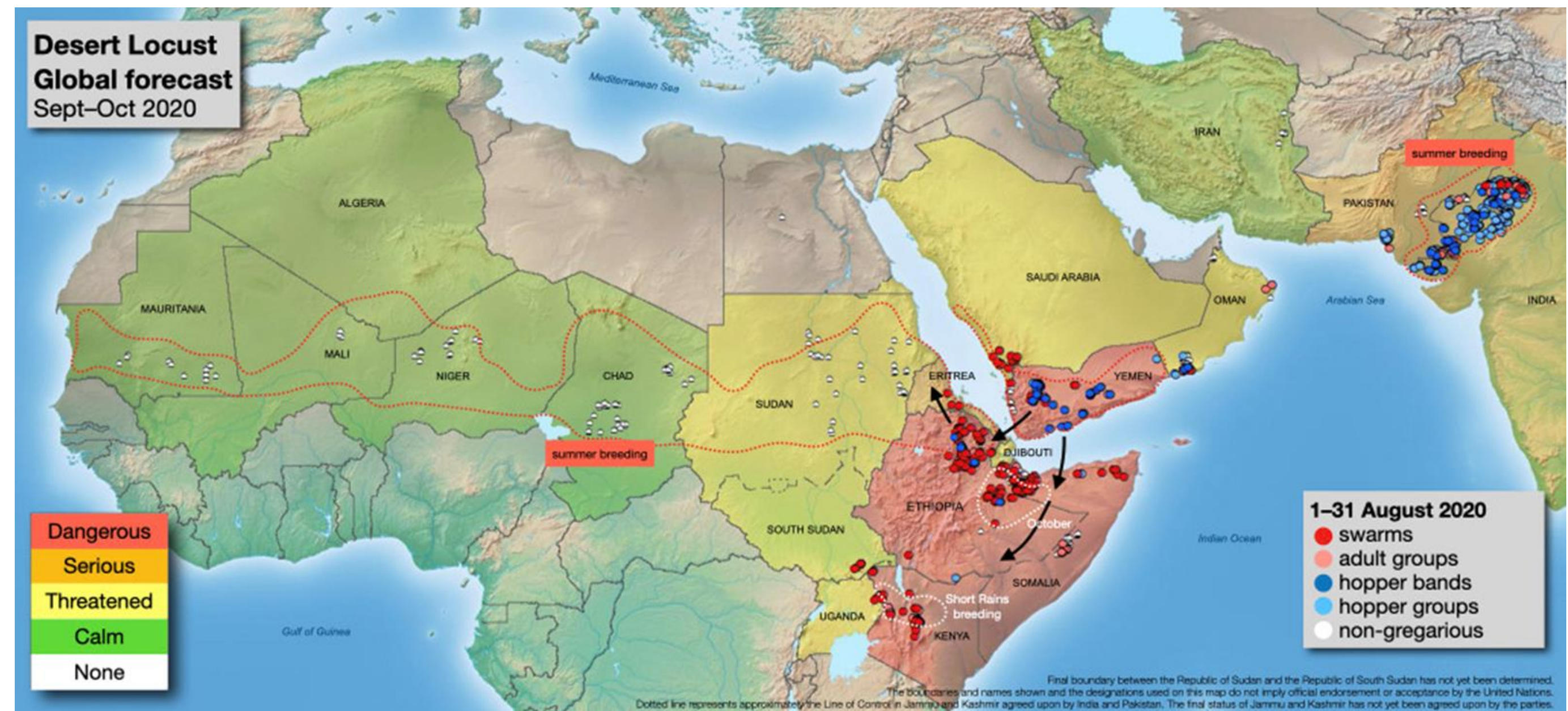


LIVELIHOOD RESPONSE

- A comprehensive plan were developed and funding from the world bank were secured to supply seed (crop and feed) for the last season damage
- Quick impact assessment were done in eastern Amhara region in order to deliver food supply
- Currently the Desert Locust is Calm in most area of the country except somali region National Impact assessment were organized to be undertaken between November 20 -30 in 34 Distrcts of the 6 clustered areas.

(Place picture here)

Desert locust forecast



CHALLENGES AND LESSONS LEARNED

● Challenges

- Aircraft maintenance (need to go other country)
- Supply of PPE
- There is a forecast Locust at all stages in somalia

● Lesson learned

- Internal capacity is essential in Aircraft maintenance and assembly
- Strengthening aircraft suppliers or EA-DLCO