



# **IGAD Bi-annual Meeting on Food Security and Nutrition**

**in the Context of Desert Locust Invasion, COVID-19 Pandemic and Widespread Flooding**

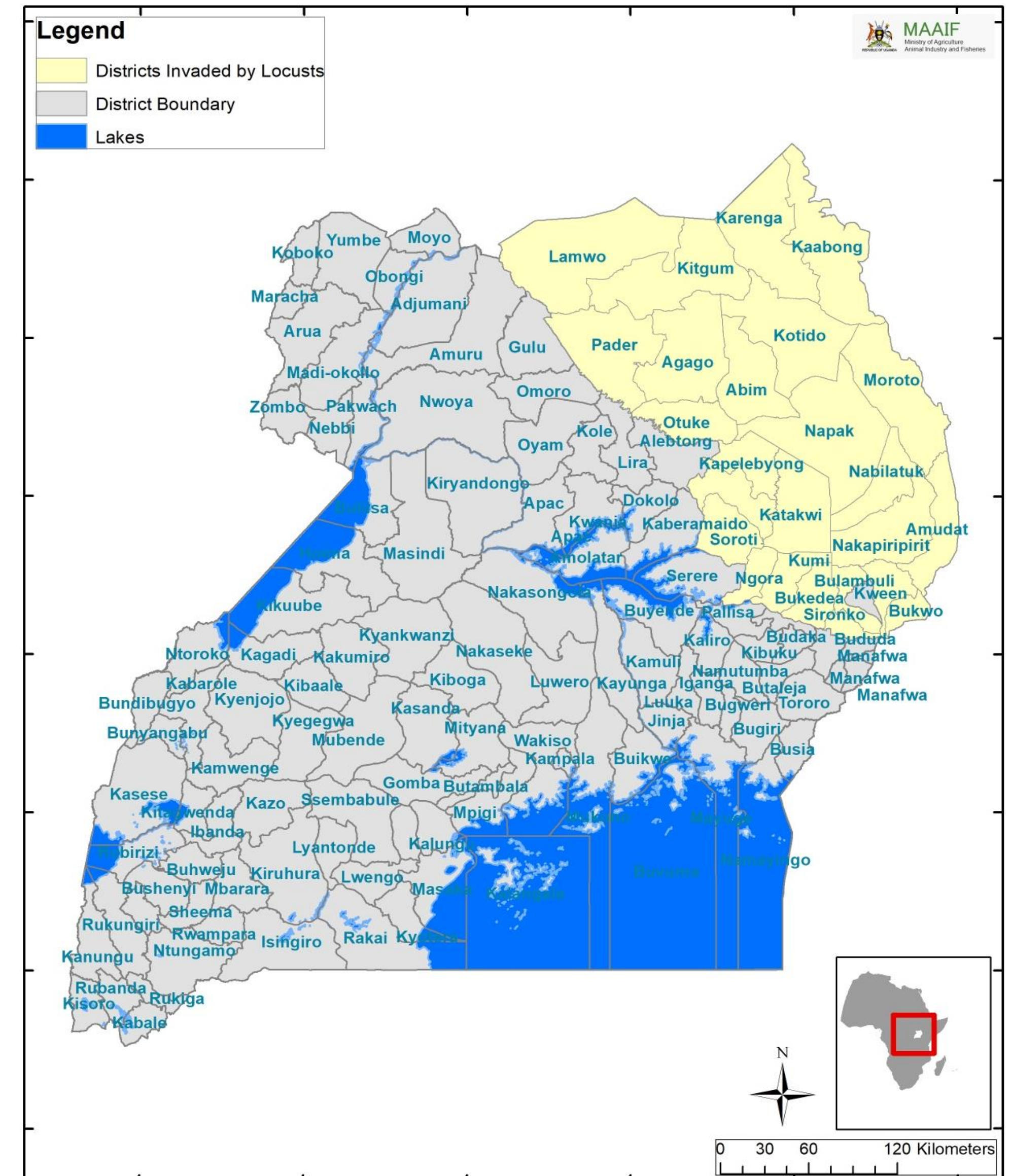
## **Uganda Update on Desert Locusts**

**Stephen T Byantwale**  
**Commissioner, Crop Protection,**  
**Ministry of Agriculture, Animal Industry & Fisheries**  
**Entebbe – Uganda**

**OLINE DISCUSSION**  
**TUESDAY 10 NOVEMBER 2020**

# CURRENT SITUATION & RESPONSE

- DL invasion in Feb 2020 after more than 70 years
- Four waves invaded from neighbouring Kenya, spread into 26 districts in north eastern Uganda
- Damage recorded on crops especially maize, sorghum and legumes (cowpeas, sunflower) in Teso and Karamoja sub regions
- Last swarms in Sept 2020 in Karenga and Kaabong districts, since then, the DL situation has been calm
- First wave (February/March) comprised of mature DL adult, laid eggs but there has not been any reported egg hatching to date





# CONTROL & COORDINATION MEASURES

- Both Policy and Technical working committees put in place to coordinate all DL response activities in Uganda
- Control undertaken in all 26 district with est. 7,680 ha aerially sprayed and est. 2505 ha sprayed by ground control teams
- Est. 2,950 litres of Fenitrothion 96% ULV and 800 litres of Malathion 96%ULV used for aerial spraying.
- Capacity building of district surveillance teams ongoing in north eastern Uganda
- Surveillance and monitoring ongoing in the invaded districts especially by the district level surveillance teams
  - Funding needed (USD): 82 m
  - Funding received (USD): 18 m
  - Funding gap (USD): 64 m





# LIVELIHOOD RESPONSE

- Impact assessment of DL done – validation of the report planned for end of the week
- Livelihood response to be guided by the impact assessment report





# CHALLENGES AND LESSONS LEARNED

- Limited technical capacity to undertake surveillance, control, EHS, swarm assessments
- Limited transport for surveillance and control teams
- Limited storage facilities for DL control supplies in Kampala and in the field
- COVID-19 restrictions – limited numbers for training
- DL not a one country problem – regional approach for management required





Thank you